

E-SERIES
Architectural Collection

UNLIMITED POSSIBILITIES
TO CREATE YOUR ORIGINAL





E-SERIES WINDOWS & PATIO DOORS

The inspiration for your home can come from anywhere and with E-Series windows and patio doors from Andersen, you'll find custom colors, unlimited design options and dynamic sizes and shapes to create the home you've always imagined.

Whether you're looking to make a design statement or to simply recreate a classic, E-Series products give you more freedom to use your imagination and create your personal vision of home. And like all Andersen products, they are supported by over 115 years of commitment to quality and service that can only come from one of the most trusted names in the industry.

For more information, please visit andersenwindows.com/e-series.





FSB® hardware features clean lines in a satin finish for a thoroughly modern look.



Dark colors and narrow profile options on windows, patio doors and grille options offer a truly contemporary style.

MODERN STYLE MADE EASY

Modern home styles incorporate clean lines, simple forms and open floor plans. They often feature floor-to-ceiling windows or glass doors with narrow profiles to maximize light and bring the outdoors in. Explore our Home Style library to see how E-Series products can help you achieve a modern home style. Visit andersenwindows.com/stylelibrary to learn more.



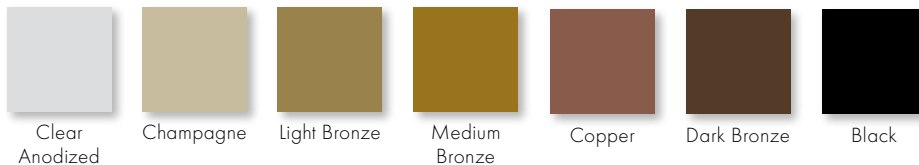
DO YOU DREAM IN COLOR?

While our large selection of 50 exterior colors covers a lot of ground, inspiration comes in infinite hues. Let us match a paint chip, a photograph or a favorite work of art to bring your dream color into the light of day. Or, choose from a selection of anodized finishes for a rich, lustrous metallic appearance that cannot peel or flake and is not affected by sunlight.*

EXTERIOR COLORS

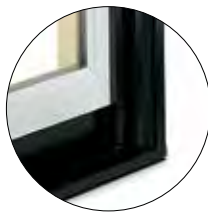


7 ANODIZED FINISHES



CUSTOM EXTERIORS OR 2-, 3- AND 4-TONE EXTERIORS

Choose a custom exterior color to get just the right color for your design. And, with our 2-, 3- and 4-tone color combinations, the sky's the limit. Mix and match up to four of our 50 exterior colors for a combination look that's all your own.



Colony white and black

EXTERIOR TRIM

Choose exterior trim in either a flat casing, brick mould or sill nosing profile to add curb appeal to your home.



2" brick mould and 1 1/2" sill nose, shown on a casement window

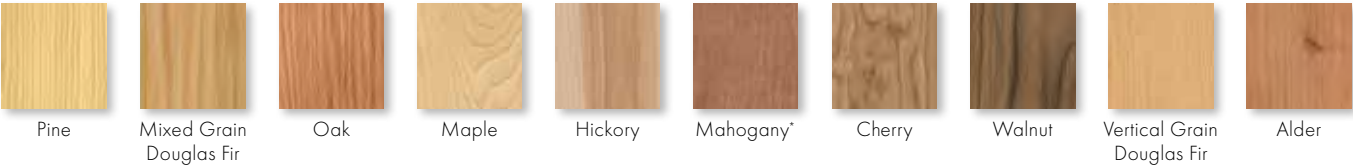
*Visit andersenwindows.com/warranty for details.
Printing limitations prevent exact color duplication. Please see your Andersen supplier for actual color samples.



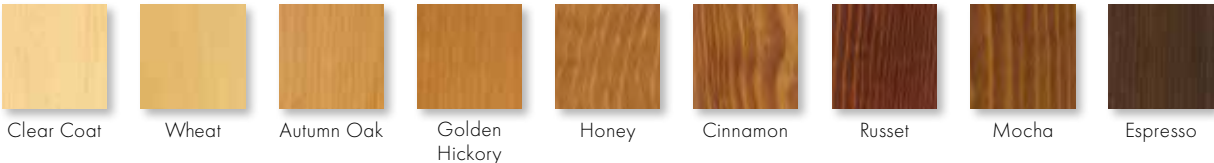
A RANGE OF INTERIORS — INCLUDING YOURS

Our distinctive woods add uncommon flair to any room. Each wood species has its own character, grain and staining capabilities so you can select one that makes your windows stand out or one that matches with your interior décor. Our high-quality, factory-applied stains offer you convenience along with beauty. Choose from a variety of wood finishes or select one of our painted options. Or for a natural look, select our clear coat option.

INTERIOR WOOD SPECIES



FACTORY-FINISHED INTERIORS



All interior finish options are shown on pine. Naturally occurring variations in grain, color and texture of wood make each window one of a kind.

INTERIOR PAINTED OPTIONS



Available on pine.

CUSTOM INTERIORS

Need an exotic wood species to complete your home or a special finish for just the right look or to match existing woodwork? We offer custom wood species and custom stain, paint or color matching for just the right finish to your design.

*Actual wood species is either Sapele or Sipo, both non-endangered species grown in Africa, with color and characteristics similar to Central American mahoganies.

**Dark bronze and black also available on maple.

†Anodized silver is available on maple only.

Printing limitations prevent exact replication of colors and finishes. Please see your Andersen supplier for actual color and finish samples.



DESIGN VERSATILITY

Extruded aluminum's strength and versatility allow us to offer beautiful made-to-order design solutions for practically any combination of shapes and styles you can imagine. And because our exterior frame, sash and trim components utilize extruded aluminum, our products feature clean, architecturally accurate lines and details to complement your home's style.

ENERGY-SAVING GLASS

We have the glass you need to get the performance you want, including a variety of Low-E4® glass options to help control heating and cooling costs in any climate.

LOW-MAINTENANCE EXTERIORS

Baked-on silicone polyester enamel exteriors offer virtually maintenance-free performance and durability. They're warranted for 10 years against chalking and color change and for 20 years against cracking, checking, peeling, flaking, blistering and loss of adhesion.*

BUILT STRONG

E-Series windows and patio doors are made with heavy-gauge, extruded aluminum-clad wood sash and frames. Our thick cladding offers greater structural capabilities than thinner, roll-form aluminum, while providing a superior exterior finish that resists the elements of inclement weather, abrasion and impact.

BUILT FOR YEARS TO COME*

Most other window and patio door warranties end when a home is sold, but our coverage — 20 years on glass, 10 years on non-glass parts — transfers from each owner to the next. And because it is not prorated, the coverage offers full benefits, year after year, owner after owner.* So it adds real value when you decide to sell your home.

OWNER2OWNER®
LIMITED WARRANTY

*Visit andersenwindows.com/warranty for details.

BEST-IN-CLASS GLASS

Glass can affect energy efficiency more than any other part of a window or patio door — and not all glass performs the same. Some types of glass do a better job at insulating your home. Others provide greater clarity. You can even choose glass to filter out specific kinds of light. Andersen offers one of the industry’s widest arrays of glass options, enabling you to find the right choice for your climate and your home. Choose from these High-Performance glass options.

GLASS		ENERGY		LIGHT	
		U-Factor How well a product prevents heat from escaping.	Solar Heat Gain Coefficient How well a product blocks heat caused by sunlight.	Visible Light Transmittance How much visible light comes through a product.	UV Protection How well a product blocks ultraviolet rays.
SmartSun™	Thermal control similar to tinted glass, with visible light transmittance similar to Low-E4 glass.	● ● ● ○	● ● ● ●	● ● ● ○	● ● ● ●
SmartSun with HeatLock® Coating	Applied to the room-side surface, it reflects heat back into the home and improves U-Factors.	● ● ● ●	● ● ● ●	● ● ○ ○	● ● ● ●
Low-E4®	Outstanding overall performance for climates where both heating and cooling costs are a concern.	● ● ● ○	● ● ● ○	● ● ● ○	● ● ● ○
Low-E4 with HeatLock Coating	Applied to the room-side surface, it reflects heat back into the home and improves U-Factors.	● ● ● ●	● ● ● ○	● ● ● ○	● ● ● ○
Sun	Outstanding thermal control in southern climates where less solar heat gain is desired.	● ● ● ○	● ● ● ●	● ○ ○ ○	● ● ● ○
PassiveSun®	Ideal for northern, passive solar construction applications where solar heat gain is desired.	● ● ● ○	● ○ ○ ○	● ● ● ○	● ● ● ○
Triple-Pane with Low-E coatings on two surfaces	Three panes of glass combine with either argon gas blend air or Low-E coatings to provide enhanced energy performance.	● ● ● ●	● ● ● ○	● ● ● ○	● ● ● ●
Clear Dual-Pane	High visibility with basic thermal performance.	● ○ ○ ○	○ ○ ○ ○	● ● ● ●	○ ○ ○ ○

Center of glass performance only. Ratings based on glass options as of March 2019. Visit andersenwindows.com/energystar for ENERGY STAR® map and NFRC total unit performance data.



Additional glass options are also available. Visit andersenwindows.com/glass or see your Andersen supplier.

HEATLOCK® TECHNOLOGY

Our HeatLock coating can increase the energy efficiency of any E-Series window or patio door with Low-E4 or SmartSun glass. Applied to the room-side glass surface, it reflects heat back into the home for improved performance.

SPECIALTY GLASS

Select from our decorative glass collections or combine beveled, frosted, grooved, colored or textured glass with three coming options to create your own design. Specialty glass includes tinted glass, spandrel glass and Mapes panels as well as rain, reeded and obscure glass options.

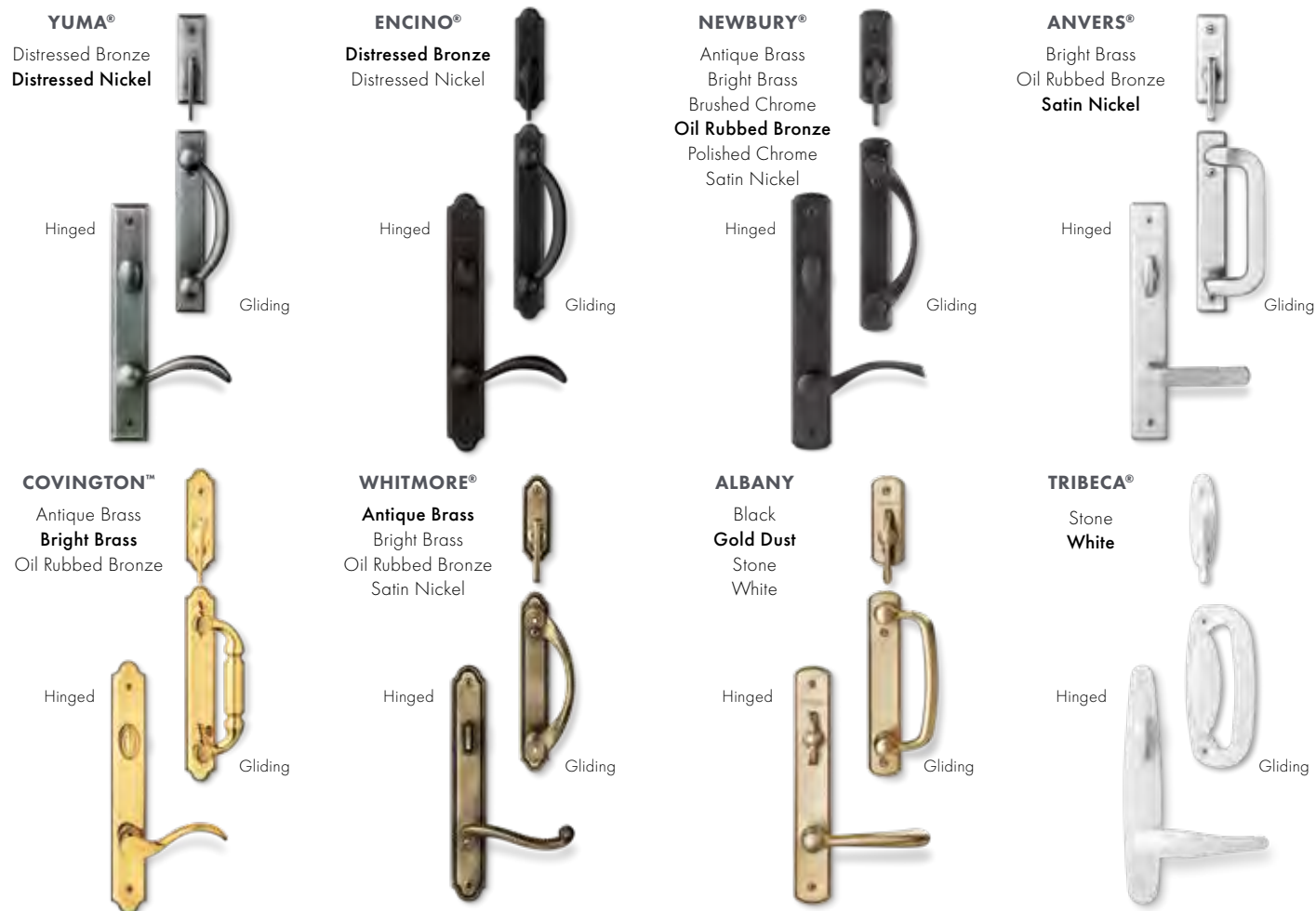
STORMWATCH® PRODUCTS

Andersen® E-Series products are available with impact-resistant glass and structural upgrades to meet the tough building codes of hurricane-prone coastal areas. Visit andersenwindows.com/coastal for more information and see your local building code official for specific requirements in your area.



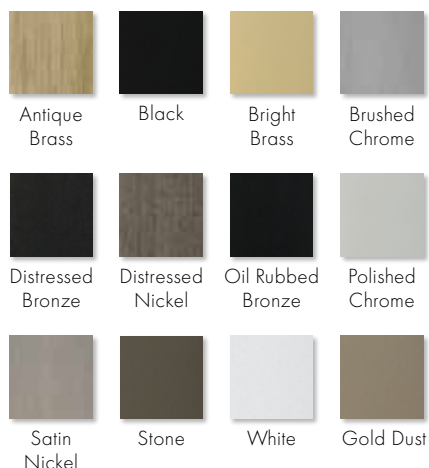
DESIGNS TO MATCH ANY STYLE

E-Series patio door hardware* is available in a variety of different designs to match virtually any style. Additional hardware options such as exterior keyed locks, matching hinge finishes and more are also available.



Bold name denotes finish shown.

HARDWARE FINISHES



FSB® HARDWARE

Durable, stainless steel FSB hinged door hardware features clean lines and a sleek satin finish for a thoroughly modern look.



*Hardware sold separately.

Distressed bronze and oil rubbed bronze are "living" finishes that will change with time and use. Bright brass and satin nickel finishes on patio door hardware feature a 10-year limited warranty.

Matching hinges available in most finishes for inswing patio doors.

Printing limitations prevent exact finish replication. See your Andersen supplier for actual finish samples.

"FSB" is a registered trademark of Franz Schneider Brakel GmbH & Co.

DETAILS THAT MAKE AN IMPACT

E-Series window hardware* offers you the styles and finishes to enhance or complement any home’s décor and style.

Casement & Awning



Operator Handle & Cover

Antique Brass | Black | Bright Chrome | Bronze | Gold
Oil Rubbed Bronze | Pewter | Polished Brass | Satin Chrome | White

Push Out Casement & Awning



Lock Handle



Insect Screen Pull

Antique Brass | Black
Oil Rubbed Bronze
Polished Brass
Satin Chrome | White

French Casement



Operator Handle & Cover



Sash Lock

Antique Brass | **Black**
Bright Chrome | Bronze
Polished Brass
Satin Chrome | White

Double-Hung



Sash Lift



Lock

Antique Brass | Black | Bright Chrome | Bronze | Gold
Oil Rubbed Bronze | **Pewter** | Polished Brass | Satin Chrome | White



Optional sash lock with VeriLock® Security Sensor shown in black. See page 15 for more information.

Gliding Windows

Antique Brass
Black | Bright Chrome
Bronze | Gold
Oil Rubbed Bronze
Pewter | Polished Brass
Satin Chrome | White



Lock

Black
Bronze
Gold
Polished Brass
White



Slim Line Sash Pull

HARDWARE FINISHES



Antique Brass



Black



Bright Chrome



Bronze



Gold



Oil Rubbed Bronze



Pewter



Polished Brass



Satin Chrome



White

*Hardware sold separately.
Oil rubbed bronze is a “living” finishes that will change with time and use.
Printing limitations prevent exact finish replication. See your Andersen supplier for actual finish samples.

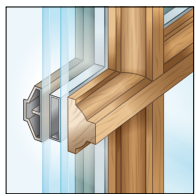


ARCHITECTURALLY AUTHENTIC GRILLES

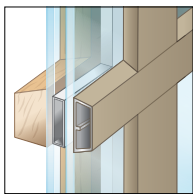
We offer a variety of grille styles and patterns to choose from, or design your own with varying lines, curves and shapes.

FULL DIVIDED LIGHT

Features permanent interior and exterior grilles with grille spacer bars between two panes of insulating glass. A traditional divided light look with modern energy efficiency.



Chamfer -
Ovolo (colonial)



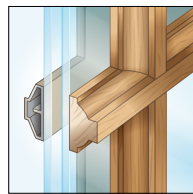
Contemporary -
Contemporary

Grille widths:
5/8", 7/8", 1 1/8", 1 1/2" & 2 1/4"

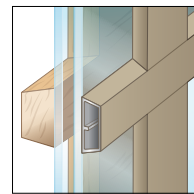


SIMULATED DIVIDED LIGHT

An economical solution featuring permanent interior and exterior grilles without grille spacer bars.



Chamfer -
Ovolo (colonial)



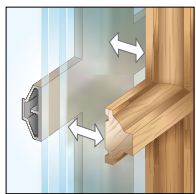
Contemporary -
Contemporary

Grille widths:
5/8", 7/8", 1 1/8", 1 1/2" & 2 1/4"

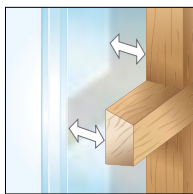


REMOVABLE INTERIOR WOOD GRILLES

Removable interior wood grilles. Available with optional surround and an optional permanent exterior grille, shown to left below.



Chamfer -
Ovolo (colonial)



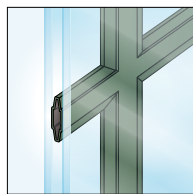
Contemporary

Grille width:
7/8"



FINELIGHT™ GRILLES-BETWEEN-THE-GLASS

Aluminum grilles conveniently placed between two panes of glass for easy cleaning inside and out.



Contoured

5/8" Flat



1" Contoured



Flat grilles are available in colony white, sierra bronze, pebble tan and forest green.

Contoured grilles are available in all 50 colors and two-tone combinations. colony white paired with black, sierra bronze, pebble tan or forest green.

SCREEN OUT THE INSECTS, NOT THE VIEW

E-Series insect screens let the beauty of the outdoors in, while keeping even small insects out. Choose from a wide selection of insect screen styles, including options that blend seamlessly with your window.

TRUSCENE® INSECT SCREENS*

TruScene insect screens for windows are made with a micro-fine stainless steel mesh that offers 50% more clarity than our conventional aluminum mesh insect screens. TruScene insect screens let in more fresh air and sunlight and keep small insects out.

WOOD VENEER INSECT SCREENS

For a clean appearance, E-Series interior window insect screens can feature a wood veneer to blend into your window.

RETRACTABLE INSECT SCREENS FOR WINDOWS AND PATIO DOORS

Retractable insect screens for casement and awning windows offer a sleek addition to any home. In place, the insect screen keeps insects out. When retracted, it provides a beautiful clear view.

For patio doors,** retractable insect screens are built with an innovative color-matched housing that hides the insect screen when not in use. It's there when you need it and gone when you don't.



Retractable insect screen for casement and awning windows.

*TruScene wood-veneered insect screens utilize a different frame profile than other E-Series wood-veneered insect screens.

**Retractable insect screens are available on hinged inswing, hinged outswing and gliding patio doors. See your Andersen supplier for details.



BETWEEN-THE-GLASS BLINDS & SHADES

Privacy options you simply have to see. E-Series blinds or shades between the glass provide the ultimate in practicality for your home. Our systems not only protect the blinds or shades, they also greatly reduce your cleaning time. Which means with Andersen, you have both privacy and convenience at your fingertips.



System 3 Shades

System 3 Blinds

BLINDS-BETWEEN-THE-GLASS

Blinds-between-the-glass can be added to many of our patio doors and rectangular picture windows. The blinds are placed between two panes of glass, available in three popular colors and can tilt, raise or lower* conveniently with a single control cord.



Control Cord

Blinds



Almond



Tan



White

SYSTEM 3 BLINDS & SHADES

System 3 blinds and shades create a triple-glazed window that provides greater energy efficiency and protects your blind or shade from damage. They are perfect for casement, awning and picture windows, and hinged patio doors. Frames are available in tan, gold, white or wood veneer.

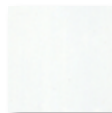
Blinds



Almond



Tan

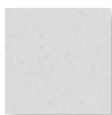


White

Shades



Almond



Pearl



Vanilla



Winter White

Control Knobs



Bronze



White



Black



Gold

*Not all sizes of blinds-between-the-glass are retractable.

Printing limitations prevent exact color duplication. Please see your Andersen supplier for actual color samples.

THE SMARTEST TECHNOLOGY FOR THE SMARTEST HOMES

Andersen® E-Series products can now be part of today's connected home. Manage the status of your windows and patio doors anytime and from anywhere and with our Yale® Assure Lock® remotely lock or unlock your hinged patio doors. Learn more about managing security and the convenience and peace of mind Andersen smart home products offer at andersenwindows.com/connect.



A monitoring option for every home and lifestyle.

YALE ASSURE LOCK*

Never worry about carrying or losing keys again. Monitor, lock and unlock from anywhere with the Yale Assure Lock. The sleek key free lock includes Bluetooth® for keyless unlocking and is compatible with Z-Wave® for integration with a wide range of smart home platforms.



Yale Assure Lock

VERILOCK® SECURITY SENSORS

With the most advanced technology in the industry, VeriLock security sensors not only indicate whether windows and doors are open or closed, they even tell you if they are locked or unlocked.** No other sensor can do that.



VeriLock Security Sensor

WIRELESS OPEN/CLOSED SENSORS

These wireless sensors provide the peace of mind of knowing whether windows and doors are open or closed.**



Wireless Open/Closed Sensor

*Available on select Andersen hinged patio doors, see your Andersen supplier for details.

**When properly configured and maintained with a professionally installed security system and/or self-monitoring system compatible with Honeywell® 5800 controls. See your supplier for more information. Yale manufactures and supports the limited warranty for Yale Assure Lock for Andersen patio doors.



THE ENVIRONMENT HAS A BUSINESS PARTNER

Respect for the environment is nothing new at Andersen. For more than a century, it's been part of who we are. Our commitment to recycle and reclaim materials began simply because it was good business. Now it's part of our broader commitment to sustainability and responsible stewardship of all our resources. Andersen is committed to providing you with long-lasting,* energy-efficient windows and doors. Visit andersenwindows.com/sustainability for more information.



Andersen makes windows and doors with options that make them ENERGY STAR® v. 6.0 certified throughout the U.S.



Andersen is a charter member of the **U.S. Green Building Council** and a strong supporter of its LEED® (Leadership in Energy and Environmental Design) National Green Building Standard rating system.



*Visit andersenwindows.com/warranty for details.

All trademarks where denoted are marks of their respective owners.
©2020 Andersen Corporation. All rights reserved. 02/20 Part #9066670