



WEATHER SHIELD®
WINDOWS & DOORS

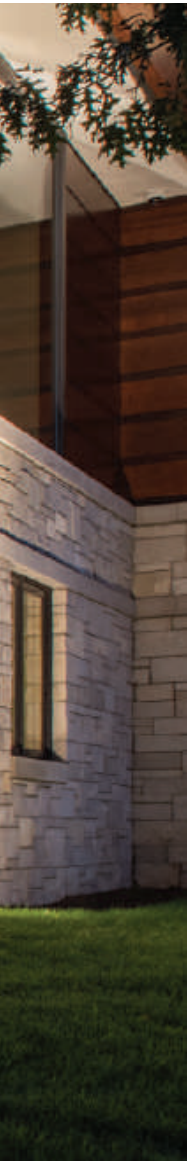
THE **CONTEMPORARY** COLLECTION

The Weather Shield Contemporary Collection

Timeless landscapes
embraced by
modern aesthetics.



Creativity expressed in smart design.



Welcome to our Contemporary Collection™. Windows and Doors with a seamless, modern aesthetic that has been flawlessly engineered and painstakingly crafted for those who reject compromise. This innovative and exceptional collection is intended specifically to enhance the expansive views of custom, high-end homes.

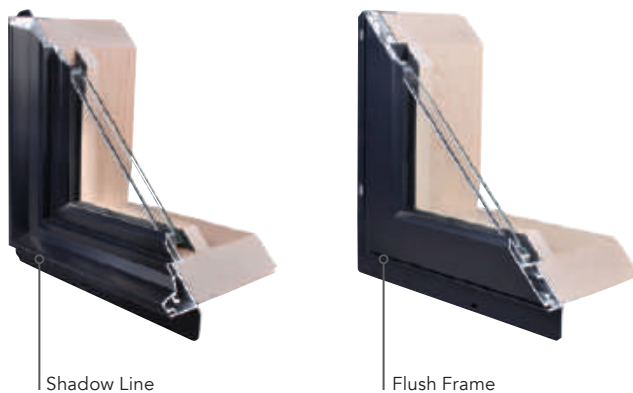
When your goal is to explore the boundaries of design, these windows and doors are up to the challenge.

The Weather Shield Contemporary Collection

Sophisticated styling. Sleek lines. Stunning simplicity. From the sightlines to the finishes and hardware, we've considered every element of design to achieve a true contemporary, minimalist appearance.

Developed in collaboration with architects and interior designers, this collection brings a bold and modern aesthetic to the residential market. It's apparent throughout our extensive offerings that great care has been taken to remain true to architecturally correct contemporary design.

Two distinct frame styles Shadow line frames feature a recessed sash to create depth and dimension. Flush frames include the sash and frame on the same plane for a clean, streamlined look.



Narrow profiles now extend to our elegant doors with a slimmed-down 3 1/4" stile and rail.

Custom hardware with modern squared-off styling, now available in a wider range of finishes.





Contemporary
perfection in
every detail.



IMAGE COURTESY OF GURNEY DALE ARCHITECTS

The Weather Shield Contemporary Collection

CASEMENT WINDOWS

The views are more expansive. The hardware is more elegant. Your options are seemingly never-ending. Explore the boundaries of modern design with the next generation of casement windows.



Sizes up to 42" x 96" offer unrestricted views that open to the outdoors.

Handle sets and lock levers have clean, right-angle lines for a smart, precise feel.

Polyurethane enamel interior paint is an option for a sleek architectural finish in an array of color choices.

Push-out casements are a beautiful alternative to crank-out style windows, offering the latest technology with unmatched design.



IMAGE COURTESY OF JAMAN PROPERTIES

Modern design,
free from
limitations.



IMAGE COURTESY OF ERSKINE PHOTOGRAPHY



A breath
of fresh air.

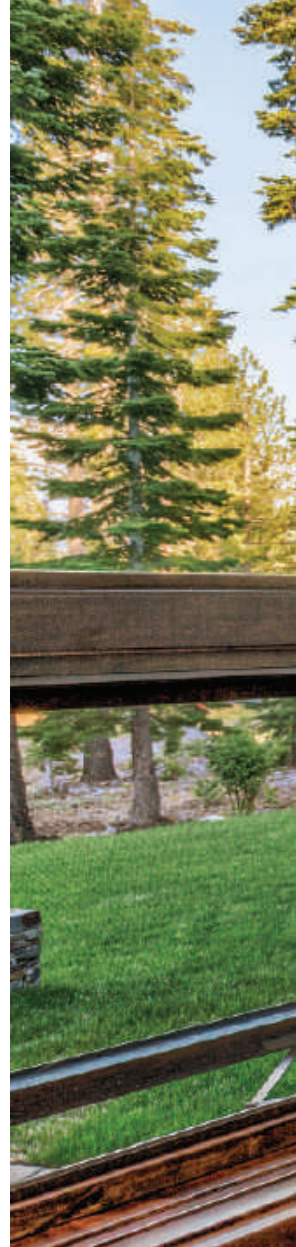




IMAGE COURTESY OF ERSKINE PHOTOGRAPHY

The Weather Shield Contemporary Collection

AWNING WINDOWS

Minimal lines welcome daylight into the room. The hinged sash opens outward to beckon the breeze. Alone or combined into a flowing ribbon of glass, awning windows can be the functional building blocks of dramatic effect. Open easily with a push-out awning option allowing greater control of airflow.



Window frames can have a flush sash for a streamlined look, or a recessed sash to add dimension. | **Low-profile cranks** have a smaller footprint and fold neatly out of the way. | **Square glazing beads** provide a visual detail that satisfies a high-end **aesthetic**. **Sizes up to 60" x 60"** for more design options.



Beauty from
all angles.

The Weather Shield Contemporary Collection

90° CORNER WINDOW

Add drama to the corners of your home design by opening them up to more glass. Our 90° corner windows have a narrow $1\frac{5}{16}$ " mullion designed to give you more view and less distraction.



144 standard sizes plus custom capabilities.

Factory glazed and ready to install.

Units can be stacked for stunning design.

Polyurethane enamel interior paint is a great finish option for dramatic interior aesthetics.

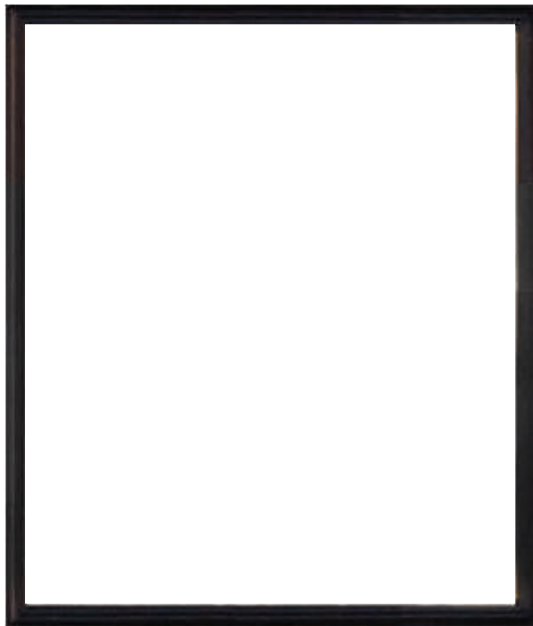


IMAGE COURTESY OF ERSKINE PHOTOGRAPHY

The Weather Shield Contemporary Collection

SPECIAL SHAPE WINDOWS

It can be a delicate and graceful curve. Or a sharp and compelling angle. If you can imagine the geometry, chances are we can configure a special shape window to add resounding punctuation to your design.



Slim-line appearance maximizes exposed glass and the admission of natural light.

Direct set design adds greater structural integrity.

Flawless craftsmanship ensures that all special shape windows are built to the highest standards.

Experience more expansive views with 70 square feet of glass available in rectangular shapes.



Make a statement
with striking elegance.





An open invitation
to light and air.

The Weather Shield Contemporary Collection

Make a statement in your home with our bi-fold window, modeled after our award-winning bi-fold door. This is the perfect solution to connect interior and exterior spaces.

BI-FOLD WINDOW



Available in maximum width of 24' and height of 6'-6" for **expansive views**.

Strong 2 ¼" thick aluminum-clad wood panels provide superior structural integrity and **energy efficiency**.

Innovative concealed shoot bolt that features simplified operation and a **clean overall aesthetic**.

U-channel sill integrates seamlessly with counter tops for a flush transition.



IMAGE COURTESY OF GIBEON PHOTOGRAPHY

The Weather Shield Contemporary Collection

HINGED PATIO DOORS

Minimalist design meets exceptional engineering. Precise, contemporary handles complement the clean lines of the panels. Square interior profiles extend the modern aesthetic, allowing a seamless marriage of doors and windows.



Thick 2 ¼" core panels strengthen door to allow narrower rails and stiles.

Single or double doors available up to 10' tall.

Secure locking system engages on 5 points of contact for a tight seal.

Narrow 3 ¼" stile and rail maximizes the view.

Expanded hardware options featuring over 11 new designs in multiple finishes.



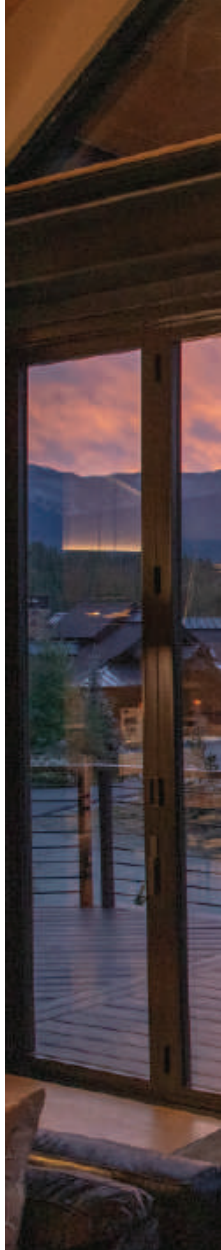
Clean lines,
curated elegance.



IMAGE COURTESY OF JAMAN PROPERTIES



Clever engineering
drives bold exploration.





The Weather Shield Contemporary Collection

BI-FOLD DOORS

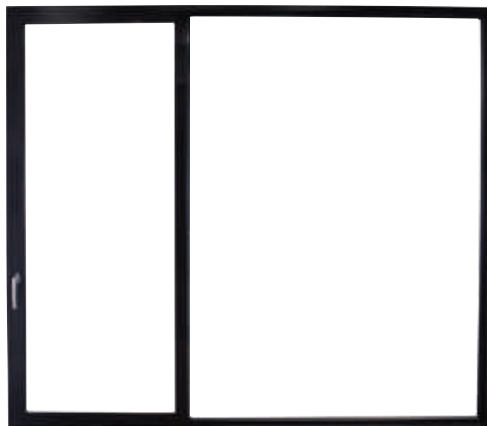
There's not a more stylish way to connect interior and outdoor spaces. With our beautifully slender bi-fold doors, you have flexible options to conceive and create expanded living areas with inspired flair.



Dramatic folding glass walls with up to 8 panels can accommodate openings over 24' x 10'. | **Narrow 3 1/4" stiles** enhance and maximize the view. | **Hinged panels** fold accordion-style to the outside along a fixed track. | **Concealed shoot bolt** system releases the shoot bolts while providing a handle for ease of operation when opening the panels.

The Weather Shield Contemporary Collection

NEXT GEN SLIDING DOORS



Our reimagined Next Gen sliding patio door features narrow profiles, more glass, and a low-profile sill to achieve industry leading performance at sizes that rival the widest and tallest in the industry.

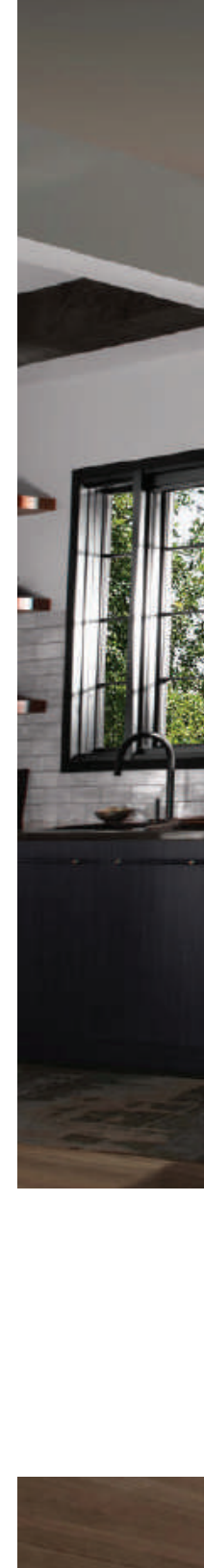
Full perimeter locking system

secures the entire perimeter of the panel against a high-performance rubber gasket, providing additional security and industry leading water performance.

Low-profile, high performance sill

integrates easily with finished flooring to create a seamless transition from interior to exterior, with a height of 1¼".

Precision bearing rollers located on the sill and head offer unmatched operation on even the largest sized doors.



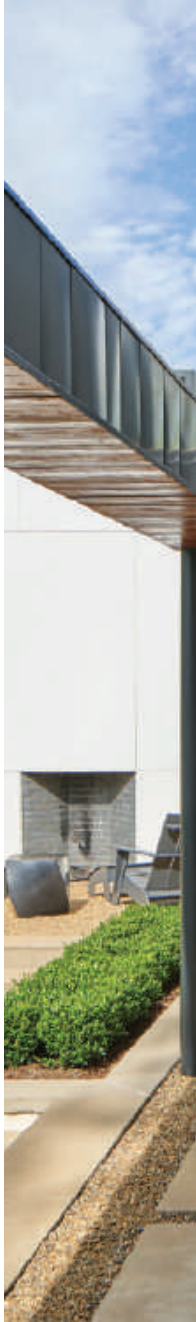


Creativity
without limits.



Sleek sightlines,
stunning views.

IMAGE COURTESY OF KEITH ISAACS PHOTO AND SANDERS PACE ARCHITECTURE





The Weather Shield Contemporary Collection

MULTI-SLIDE DOORS

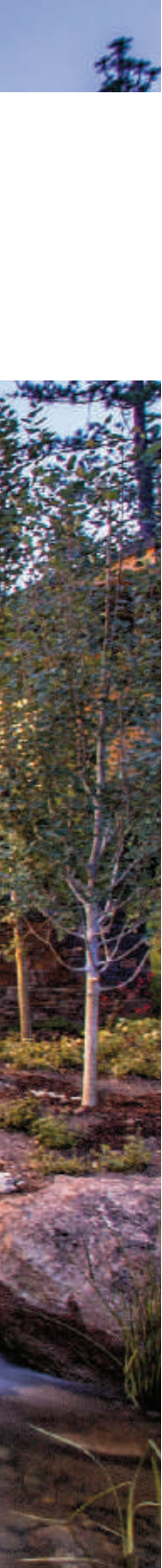
Accent the connection between a home and its surroundings. Design light-drenched living spaces that flow effortlessly onto outdoor lounging areas. With massive spans up to 50' wide and 10' high, our sliding and multi-slide doors let imaginations soar.



Slim-line appearance maximizes light for a natural ambiance that's warm and welcoming. | **Contemporary hardware** offers a clean, sophisticated look. | **Multiple configurations** from 2-panel slider to 10-panel pocket. | **Precision bearing rollers** are engineered with exacting hardware for effortless motion.



Five reasons
to consider
Weather Shield.



With hundreds of window and door manufacturers to choose from, it can be difficult to distinguish one company from another. We thought it might be helpful to share a few of the things that set Weather Shield apart from the rest.

Continuous innovation At Weather Shield, we never stop searching for ways to improve both our products and our processes. The goal of discovering new and innovative solutions has always been part of our DNA. That's why we have our own dedicated Research & Development Center and the largest onsite test lab in the industry. Not a day goes by when we aren't working on building a better product.

Best-in-class warranty At Weather Shield, we do more than talk about our dedication to craftsmanship and quality materials. We back our products with a warranty against defects in material or workmanship for a period of 20 years, and against wood rot on all clad products for 30 years.* So you can be confident you're getting an outstanding product from a trustworthy company.

Design flexibility When you design with Weather Shield, you have options. Our casements alone allow you to create more than 6,000,000 different configurations.

Choose from an impressive array of wood interiors and finishes, along with a myriad of exterior colors. We also offer some of the industry's largest expanses of glass for framing spectacular views. Whatever the style, whatever the size, nobody gives you more choices than Weather Shield.

Energy efficiency without sacrifice Through our innovative use of materials and design, we're able to offer industrial strength efficiency with refined appearance. We're very deliberate in our use of energy efficient materials to drive performance where it matters most. We're proud to offer an extensive number of beautifully designed ENERGY STAR® rated products.

Family owned & operated For more than 60 years, Weather Shield has remained a family-owned and operated company. That allows us the freedom to take a long-term perspective and keep our focus on serving customer needs rather than a singular focus of achieving quarterly financial targets.

As we've grown to become a respected national brand, we've seen technology and materials evolve. But our core values have never changed. Today, we remain dedicated to building long-term relationships and crafting innovative products that meet the needs of our customers.

WEATHER SHIELD®
WINDOWS & DOORS

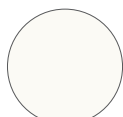
*For more specific information regarding our warranty, visit weathershield.com/warranties.

The Weather Shield Contemporary Collection

EXTERIOR COLOR OPTIONS

To help you get the exact look you desire, we offer an ever-expanding palette of durable and distinct exterior color options rated to the highest industry standards (AAMA 2605) for color retention.

Standard exterior colors For most homes, finding the right exterior look is as easy as choosing from among our 12 popular standard colors.



White



Cameo



Tan



Desert
Tan



Heritage
Brown



Adobe



Craftsman
Bronze



Brick Red



Hartford
Green



Gray
Matters



Obsidian



Jet Black

Finishes and colors shown may not be actual representations.
Please visit authorized Weather Shield dealer for color samples.





The Weather Shield Contemporary Collection

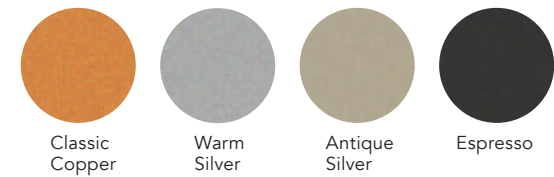
Designer Exterior Colors

Alabaster	Pampered Peach	Pearl	Moderate White	Accessible Beige
Olympus White	Linen	Sandstone	Salt Marsh	Driftwood
Vital Yellow	Sunbeam Yellow	Restrained Gold	Timberidge	Autumn Leaf
Mist Grey	Stone Gray	Prestige	Charcoal	Gunpowder
Aegean Blue	Distance	Blue Stone	Indigo	Dark Night
Shoreline	Arcadian	Sage Green	Oceanside	Blue Hill
Woodland Green	Bercoritz Green	Black Forest	Bronze Green	Tudor House
Streamline Gray	Moss	Superior Bronze	Shale	Quaker Bronze
Sundried Tomato	Firebrick	Boysenberry	Royal Brown	Appalachian

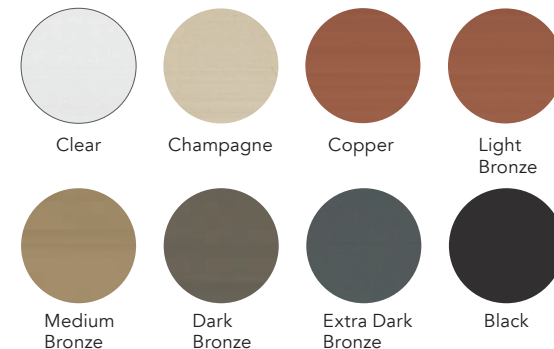
Finishes and colors shown may not be actual representations. Please visit authorized Weather Shield dealer for color samples.

Special exterior colors & finishes With 45 designer colors and a range of anodized, radiant metallic and textured finishes, we can help you find the perfect match for whatever you have in mind.

Radiant Metallic Finishes



Anodized Exterior Aluminum Finishes



Textured Exterior Aluminum Finishes



The Weather Shield Contemporary Collection

INTERIOR WOOD OPTIONS

Every home is different. So we give you choices to add your own special touch. Choose the wood species and stain finish that complement your design. Then add warmth and beauty with our factory finishes.

Rich wood interiors With eight wood species to choose from, there's sure to be one perfect for your home. For a truly unique look, other wood species are available upon request. All wood on our windows, inside and out, is protected by a 30-year warranty against rotting.*



Pine (Standard)



Oak



Maple



Vertical
Grain Fir



Mixed
Grain Fir



Cherry



Mahogany



Alder
(Character)

Finishes and colors shown may not be actual representations.
Please visit authorized Weather Shield dealer for color samples.

*For more specific information regarding our warranty,
visit weathershield.com/warranties.



INTERIOR FINISH OPTIONS

Durable factory finishes Save time and money with our factory finishing. The wood is stained and sealed on all surfaces to repel moisture and includes two Clear Satin top coats for durability and easy cleaning.



Designer stains Explore our furniture-grade stain offering created in partnership with leading paint and coatings manufacturer, Sherwin-Williams®. These new stains provide clean, vivid colors with high pigmentation for excellent clarity and uniformity.



PROUDLY FINISHED WITH
SHERWIN-WILLIAMS®

Customize interior aesthetics Vary the finish from room to room with factory-applied polyurethane enamel paints. Backed by a 10-year warranty*, our poly paints add a durable, architectural finish in any standard, designer or custom color. Units arrive finished and ready to install.

Finishes and colors shown may not be actual representations. Please visit authorized Weather Shield dealer for color samples.

*For more specific information regarding our warranty, visit weathershield.com/warranties.

The Weather Shield Contemporary Collection

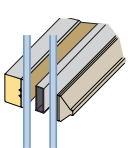
GRILLES

We offer grille options to suit any design: grille between the glass (GBG) and simulated divided lite (SDL).

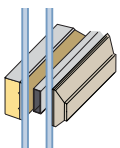
Grille between the glass GBG consists of aluminum muntin bars between two panes of insulating glass, giving you the look of divided lites while making window cleaning easier.

Simulated divided lite Permanently applied to the glass, SDL consists of exterior and interior grille bars, plus an aluminum spacer bar to achieve clean, three-dimensional sightlines that most owners of fine homes prefer.

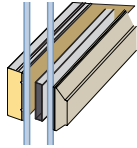
Square interior bar profile



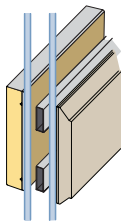
5/8" SDL



7/8" SDL



1 1/8" SDL



2" SDL



IMAGE COURTESY OF RYANN FORD PHOTOGRAPHY



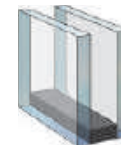
The Weather Shield Contemporary Collection

GLAZING

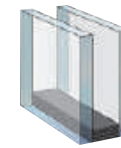
For optimal performance in any climate, we offer the most extensive selection of energy efficient glass options available. The exclusive Zo-e-shield® glazing systems feature multiple layers of Low-E coating, inert gas-filled insulating airspace*, and ultimate energy efficiency for any climate.

Add color or texture – or privacy and modesty – to your palette of design options. Special finishes and tint can give a project distinction. Specialty glasses include bronze, gray, rain, and obscure.

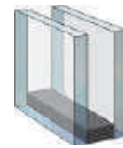
Glazing options



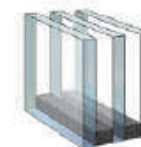
Insulated Low-E
All Climate



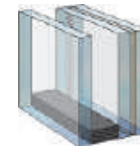
Zo-e-shield 5
Ultimate Solar Control



Zo-e-shield SE
Zo-e-shield 5 +
Room-side Low-E



Zo-e-shield 7
Triple Glazed with
Five Coats of Low-E



SAFEGUARD
Zo-e-shield 5 +
Laminated Interior

*Inert airspace gases not available in all states. Please visit an authorized Weather Shield dealer for availability.

The Weather Shield Contemporary Collection

CASEMENT AND AWNING WINDOW HARDWARE

Our exclusive contemporary window handle and lock lever helps you create a consistent, seamless look throughout your interior space. The fold-away design produces a sleeker, smaller footprint that won't damage or interfere with window treatments. Choose from 8 stylish finishes.

Corrosion resistant hinges We use heavy gauge, stainless steel for our window hardware because this corrosion resistant material is designed to provide a lifetime of effortless operation. It's the perfect complement to expertly engineered windows, designed to last.



Contemporary
Lock Lever



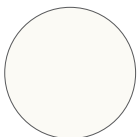
Contemporary
Nested Handle



Transitional
Push-Out Handle



Contemporary
Push-Out Handle



White



Tan



Rustic
Bronze



Bright
Brass



Brushed
Gold



Brushed
Nickel



Polished
Chrome



Matte
Black





IMAGE COURTESY OF GIBEON PHOTOGRAPHY



HINGED DOOR HARDWARE

Our hinged doors benefit from exceptional hardware and unique designs. Choose from several different collections and a variety of finishes in order to achieve precisely the right aesthetic for your home.

Crafted for endurance We use only the finest materials in our hinged door hardware, including corrosion resistant stainless steel. Each piece is tailored to your home, bringing unmatched ease of use and beautiful design to your hinged patio doors.

Ashley Norton Collection



Apollo
Brass Base Finish



Living Finish



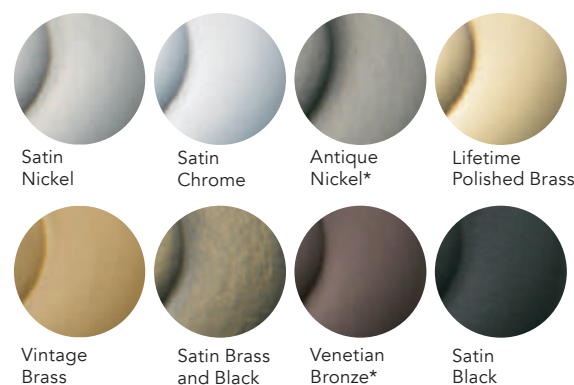
Meridian
Bronze Base Finish



Baldwin Collection



Richland



Hoppe Collection



Dallas



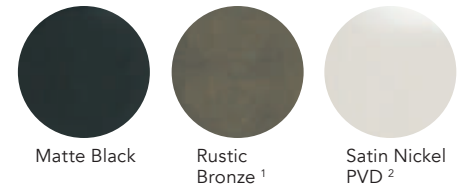
*Hand-relieved finish variances. Product finishes which are hand relieved may vary in luster, hue and appearance as a result of handcrafted variances in the final finishing step.

The Weather Shield Contemporary Collection

SLIDING DOOR
HARDWARE

Flush hardware The narrow contemporary back plate offers a clean and sophisticated look for our multi-slide doors.

Three-point locking handle sets Available in 3 finishes, these sliding patio door locking handles offer both stylish looks and superior security.



¹ Flush hardware available in Oil-Rubbed Bronze, which is comparable to Rustic Bronze.
² Sliding door hardware is available in Alpine Frost, which is comparable to Satin Nickel.
Finishes and colors shown may not be actual representations. Please visit authorized Weather Shield dealer for color samples.





The Weather Shield Contemporary Collection

BI-FOLD DOOR HARDWARE

The **concealed shoot bolt system** released the shoot bolts while providing a handle for ease of operation when opening the panels.

Available in an **array of colors** and textures to suit any user's tastes. Options range from ultra modern brushed nickel to sleek black, allowing you to achieve any desired look.

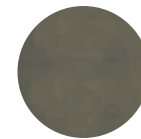
**Dallas
Handle**



**Centor Twin-Bolt
Locking System**



Matte Black



Rustic
Bronze ¹



Satin Nickel
PVD ²

A solid foundation
to build on.





HISTORY

When Edward Lee Schield designed his first window in 1955, he set into motion a company built around an inventive spirit. His enthusiasm for innovation defines Weather Shield to this day. After more than 60 years and 33 patents, Weather Shield remains faithfully focused on creating something better and purposeful.

Our quest to bring you the latest and greatest products is firmly grounded in serving the needs of our customers. We're still a family-owned business that believes in listening closely to the people who specify, buy and install our windows and doors. Their input is critical as we strive to improve and perfect every aspect of product design and performance.

Our Contemporary Collection of products embraces our founder's vision of combining old-world craftsmanship with innovative designs and materials. This comprehensive collection features modern aesthetics with the latest advancements in energy efficiency. The end result is a broad, bold and beautiful palette to help bring your dream design to life.

ARCHITECTURAL SERVICES

Weather Shield's architectural team is here to help you solve your design challenges. Whether you're dealing with the requirements of an historic renovation, designing a one-of-a-kind configuration, or facing stringent structural or thermal demands, we're ready, willing and able to help you get it right.

To contact a specialist in our architectural consultation group, call 800.538.8836.

Business hours are 8am – 5pm CST, Monday – Friday.

Or email archservices@weathershield.com.

WEATHER SHIELD®
WINDOWS & DOORS



IMAGE COURTESY OF HAIRSTON PHOTOGRAPHY

WEATHER SHIELD®
WINDOWS & DOORS

800.222.2995
weathershield.com

© 2020 Weather Shield Mfg., Inc.

1292039 07/20