

BALDWIN®



ESTATE™

LOCK & CABINET HARDWARE

PORTFOLIO 2020



BALDWIN[®]

BALDWIN HARDWARE.

THE STYLE. THE QUALITY. THE LUXURY.

Baldwin is the trusted hardware leader with a 75-year reputation for bold design, crafted styling, and cutting-edge innovation that creates a sense of distinction in your home.

a Reflection of you

ESTATE[™]

Baldwin Estate is the ultimate in style, quality, customization, and luxury for personalized design that is timeless.

crafted FOR DISTINCTION

BALDWIN[®]

EVOLVED[™]



SMART NEVER LOOKED SO BEAUTIFULLY

Experience the bold evolution of luxury hardware with Baldwin Evolved, blending exquisite architectural designs with Kevo technology.



TOUCH-TO-OPEN

Touch-to-open Bluetooth technology and key fob access offers convenience and peace of mind.



DIGITAL EKEYS

Easy-to-use app provides eKeys for remote access, real-time access history and remote unlocking abilities.



CONTROL BY PHONE

Evolved connects through advanced bridge technology allowing users to easily open and close doors via their smartphone and the Kevo mobile app.



HOLLYWOOD HILLS

EVOLVED

polished brass

85311.033



Cody Evolved 3/4
85352.050



Cody Evolved Full
6403.150



Devonshire Evolved
6401.102



Canterbury Evolved Sectional
85305.003



Boulder Evolved Sectional
85353.102



Minneapolis Evolved Sectional
85390.260



Kensington Evolved
6426.044



Bethpage® Evolved
85337.003



Manchester Evolved
85350.033



Boulder Evolved 3/4
85354.452



Boulder Evolved Full
6402.190



Stonegate Evolved
85355.151



PALM SPRINGS		85396.260
EVOLVED	<i>polished chrome</i>	



Blakely Evolved
85360.003



Soho® Evolved ¾
85387.150



Minneapolis™ Evolved ¾
85391.055



Minneapolis™ Evolved Full
85392.056



Palm Springs™ Evolved ¾
85396.260



Palm Springs™ Evolved Full
85397.055



Hollywood Hills Evolved Full
85311.033



Evolved Arched Deadbolt
8252.402



Evolved Contemporary Deadbolt
8220.150



Boulder Sectional Handleset Kit
85353.402



Minneapolis Sectional Handleset Kit
85390.260



Evolved Fob
8380.055

BALDWIN[®]

TOUCHSCREEN



BEAUTIFULLY BALDWIN. STYLISHLY SECURE.

- Minneapolis and Boulder Styles
- Available in 17 beautiful finishes
- The responsive touchscreen interface uses cool white LEDs for defined illumination in the dark or daylight
- Up to 16 customizable user codes for family, guests and service professionals
- Installs in minutes with just a screwdriver, no hard wiring needed
- 5 pin C-Keyway cylinder
- Deadbolt exceeds ANSI/BHMA Grade 2 requirements
- 20 minute UL deadbolt rating



ADVANCED CAPACITIVE TOUCHSCREEN

Activate the touchscreen with your fingertips.



SECURESCREEN[™] TECHNOLOGY

Codes cannot be identified for fingerprints.



ONE-TOUCH LOCKING

Lock your door with one single touch.



BOULDER		85358.112
TOUCHSCREEN	venetian bronze	



**Minneapolis
Touchscreen Deadbolt**
8225.xxx
8225.xxx.OS
8225.xxx.IS



**Minneapolis
Touchscreen Deadbolt
with Lakeshore Lever**
Single Cylinder
85393.xxx.RENT
85393.xxx.LENT



**Boulder
Touchscreen
Deadbolt**
8235.xxx
8235.xxx.OS
8235.xxx.IS



**Boulder
Touchscreen Deadbolt
with Beavertail Lever**
Single Cylinder
85358.xxx.RENT
85358.xxx.LENT



**Canterbury
Touchscreen Deadbolt
with Wave Lever**
Single Cylinder
85306.xxx.RENT
85306.xxx.LENT

BALDWIN

Hollywood Hills
by Erinn V.



CLEAN MODERNISM WITH TIMELESS AESTHETIC

Baldwin's new Hollywood Hills collection by Erinn V. was inspired by the clean modernism of 1930s industrial design. Her work can be best described as Modern Classic with a fresh, yet timeliness aesthetic. She strikes a balance between traditional and modern with statement-making pieces that leave a lasting first impression.

ABOUT ERINN V.

Erinn Valencich is the founder and creative director of Erinn V. Design Group, the award-winning Los Angeles-based boutique design firm. Since 2004, her style has become synonymous with the classic California lifestyle. The granddaughter of a fine cabinetmaker and daughter of an architect who studied with Frank Lloyd Wright, Valencich's approach to design underscores the importance of craftsmanship, materiality and celebrates luxe, livable furnishings.





**Hollywood Hills
Mortise Knob x
Knob Entrance Set**
6945.112



**Hollywood Hills
Mortise 20" Full
Escutcheon Handleset**
6946.260



**Hollywood Hills
Tubular 3/4
Escutcheon Handleset**
85310.060



**Hollywood Hills
Full Escutcheon
Handleset**
85311.150



**Hollywood Hills
Evolved Full
Escutcheon Handleset**
8511.033



**Hollywood Hills
Deadbolt**
8260.060



**Hollywood Hills
K007 Knob
w/R049 Rose**
K007.xxx.IMR



**Hollywood Hills
K008 Knob
w/R050 Rose**
K008.xxx.IMR



**Hollywood Hills
K009 Knob
w/R051 Rose**
K009.xxx.IMR

HOLLYWOOD HILLS

MORTISE KNOB X KNOB

polished chrome

6945.112



LEXINGTON®		6560.151
ENTRANCE TRIM	<i>antique nickel</i>	



Trenton™
6567.102



Concord®
6571.102



Trenton™
Knob Set
6765.102



Baltimore®
6552.102



Lexington®
6560.102



Springfield®
6573.102



Lexington®
Knob Set
6795.102

Unless noted, entrance styles that begin with an 8 are for tubular preparation.



BLAKELEY™		85360.150
EMERGENCY EGRESS	<i>satin nickel</i>	



Blakely™
Emergency Egress
85360.151



Landon™
Two Point Lock
85345.150



Logan™
85315.151



Madison™
85320.402



Stonegate™
Emergency Egress
85355.112

Unless noted, entrance styles that begin with an 8 are for tubular preparation.



BISMARCK®		6942.003
ENTRANCE TRIM	<i>polished brass</i>	



Bethpage®
85337.112 (Tubular)
M522.112 (Mortise)



Bethpage®
Sectional
85327.003



Bismark®
6942.044



Canterbury®
85305.402



Manchester®
Emergency Egress
85350.050



TREMONT TUBULAR		85345.056
ENTRANCE TRIM	<i>satin nickel</i>	



Lakeshore™
6966.055



Lakeshore™
Lever Set
6502.055



Minneapolis®
6976.260



Minneapolis® 20"
6977.260



Tremont™
6542.055



Houston®
6973.055



Santa Monica™
6915.150



**Soho®
¾ Emergency Egress**
85387.056 (Tubular)
M516.056 (Mortise)



**Soho®
Two Point Lock**
85385.264



Soho® Sectional
85386.264



**Minneapolis®
¾ Emergency Egress**
85391.260



**Minneapolis®
Full Emergency Egress**
85392.260



**Minneapolis®
Sectional**
85390.260



**Palm Springs™
¾ Emergency Egress**
85396.260 (Tubular)
6920.260 (Mortise)



**Palm Springs™
Full Emergency Egress**
85397.260 (Tubular)
6921.260 (Mortise)



**Tremont Tubular
Full Emergency Egress**
85342.260 (Tubular)

MINNEAPOLIS®		85392.260
FULL EMERGENCY EGRESS	polished chrome	



LAKESHORE™		6966.264
ENTRANCE TRIM	<i>saturn chrome</i>	



Barclay® Knob Set
6554.044



Bristol®
6963.050



Bristol® Lever Set
6991.055



Hamilton®
6544.055



Hamilton® Lever Set
6791.044



Nashville®
6547.044

Unless noted, entrance styles that begin with an 8 are for tubular preparation.



RICHLAND®		6999.452
ENTRANCE TRIM	<i>distressed antique nickel</i>	



Cody®
¾ Escutcheon
85352.452 (Tubular)
M502.452 (Mortise)



Cody®
Full Escutcheon
6403.452 (Tubular)
M504.452 (Mortise)



Boulder®
¾ Escutcheon
85354.452 (Tubular)
M512.402 (Mortise)



Boulder®
Full Escutcheon
6402.402 (Tubular)
M514.402 (Mortise)



Pasadena™
6944.112



Richland®
6999.452



VICTORIA™		6948.050
ENTRANCE TRIM	<i>satén brass & black</i>	



Kensington®
6950.060



Kensington® Lever Set
6790.060



Kensington®
¾ Escutcheon
6426.112 (Tubular)
6526.112 (Mortise)



Edinburgh®
6952.060



Edinburgh® Lever Set
6789.150



Victoria™
6948.150



Victoria™ Lever Set
6993.050

Unless noted, entrance styles that begin with an 8 are for tubular preparation.



SANTA MONICA®		MP005.150
ENTRANCE TRIM	<i>santa monica</i>	



Springfield®
MP001.102



Bismark®
MP002.050



Kensington®
MP003.112



Concord®
MP004.150



Santa Monica®
MP005.150



Bristol®
MP009.150



Richland®
MP011.150



Lakeshore®
MP013.260



Cody®
MP015.190



Boulder®
MP016.102



L006.112



L002.264



K002.050



L002.264



K004.060



L004.150



K006.151



L006.112



5069.150



5112.150



5011.150



5113.150



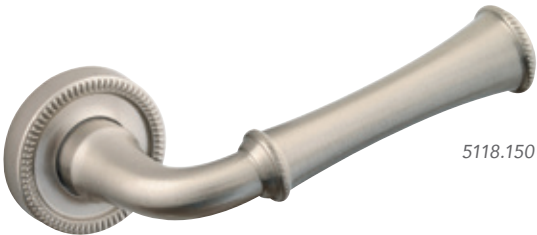
5045.150



5116.150



5066.150



5118.150



5068.150



5141.150



5069.150



5000.102



5005.050



5009.030



5055.150



5015.102



5020.050



5013.050



5041.260



5023.452



5057.050



5050.060



5073.260



5025.402



5060.050



5067.050



5024.150



5030.102



5064.050



5080.030



5077.150



5103.190



5101.050



L018.150



5138.260



5104.003



5107.055



L020.150



5161.150



5106.190



5108.060



L021.150



5162.150



5125.003



5121.060



L022.150



5164.150



5152.055



5122.003



L023.150



5165.150



5440V.050



5190.102



L024.260



5166.150



5445V.102



5447V.102



L025.260



5173.150



5455V.150



5452V.190



5105.150



5460V.150



L016.260



L015.112



5137.150



5485V.150

DEADBOLTS



Traditional Deadbolt
8231.150 (also 8021, 8031, 8232)



Contemporary Deadbolt
8241.150 (also 8011, 8041, 8242)



Soho® Deadbolt
8285.264 (also 8286)



Bethpage® Deadbolt
8237.112 (also 8238)



Arched Deadbolt
8252.402 (also 8253)



Hollywood Hills Deadbolt
8261.060



Santa Monica™ Square Deadbolt
8220.150 (also 8221)



Concord® Square Deadbolt
8254.452 (also 8255)



Palm Springs® Deadbolt
8250.260 (also 8251)

KEYLESS ENTRY



Soho® Deadbolt
8285.150.AC1



Boulder® Deadbolt
8252.112.AC1

MIX & MATCH

With Baldwin, you can customize your door hardware. Mix any Estate™ knob or lever with any rose. Even change out the knob or lever on any handleset or entry set to fit your taste.



5068 Knob
Shown w/ 5048 Rose



5068 Knob
Shown w/ 5038 Rose



5068 Knob
Shown w/ 5017 Rose



5068 Knob
Shown w/ 5076 Rose



5068 Knob
Shown w/ 5002 Rose



5068 Knob
Shown w/ 5058 Rose

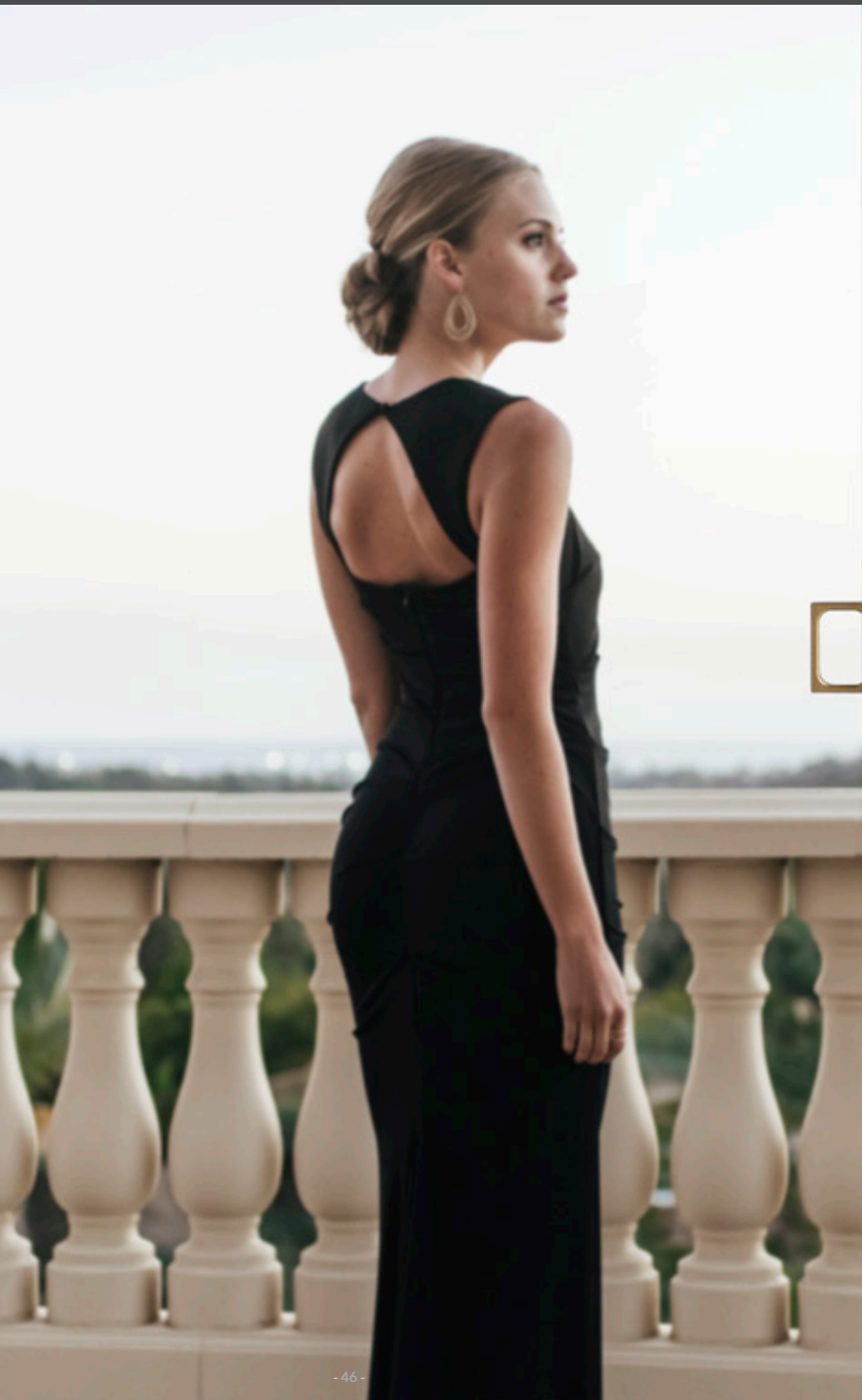


5068 Knob
Shown w/ 5070 Rose

POCKET DOOR LOCKS

Check out the Boulder, Palo Alto and Santa Monica large and small. Available in four styles, we have the pocket door lock for every design aesthetic.

Baldwin offers these four styles in privacy, passage and keyed entry, in the highest quality; just what you expect from Baldwin. Unlock your design inspiration.



BOULDER

The Boulder collection features rustic undertones, and is available in 20 finishes.



PD016.150.KC



PD016.150.KT



PD016.150.KE



PALO ALTO

The Palo Alto style blends soft lines with a contemporary flair. Available in 20 finishes.



PD007.150.KC



PD007.150.KT



PD007.150.KE



SANTA MONICA

The Santa Monica style puts a visual emphasis on vertical and horizontal lines, with a focus on pure geometry without sacrificing comfort. It's available in both Large and Small varieties in all 20 finishes.



PD005.150.KC



PD005.150.KT



PD005.150.KE



PD006.150.KC



PD006.150.KT



PD006.150.KE





Concord
SD004.151.PRIV



Minneapolis
SD005.150.PRIV





Hollywood Hills Cabinet Knob
4973-150.BIN



Hollywood Hills 3" Cabinet Pull
4485-031.BIN



Hollywood Hills 6" Cabinet Pull
4486-112.BIN



Hollywood Hills 15" Appliance Pull
4983-260



Hollywood Hills 18" Appliance Pull
4984-031

Working in concert with Baldwin's industrial design team, Valencich developed a collection that is uniquely Baldwin, with unmatched quality and craftsmanship and also undeniably "Erinn V" with a California-cool vibe. Valencich loves clean, industrial lines and drew inspiration for Hollywood Hills from the linear, stacked geometry found in nautical pieces.



Classic Cabinet Knob



Deco Cabinet Knob
4493 (1.25") • 4494 (1.5")



Round Edinburgh Cabinet Knob
4629 (1.25") • 4630 (1.5")



Couture Cabinet Knob
4635 (1.33")



Palm Springs Knob
4970 (1.5")



Couture Cabinet Knob
4636 (1.27")



Rope Cabinet Knob
4645 (1.25") • 4646 (1.5")



Ring Deco Cabinet Knob
4446 (1.25") • 4447 (1.5")



Severin Fayerman Cabinet Knob
4453 (1.25")



Colonial Cabinet Knob
4650 (1") • 4655 (1.25") • 4660 (1.5")



Classic Cabinet Knob
4702 (.75") • 4704 (1") • 4706 (1.25")
4708 (1.5") • 4709 (1.75")



Severin Fayerman Cabinet Knob
4455 (1.06")



Severin Fayerman Cabinet Knob
4456 (1.32")



Oval Cabinet Knob
4910 (1.125") • 4913 (1.375") • 4939 (1.625")



Decorative Oval Cabinet Knob
4915 (1")



Melon Cabinet Knob
4458 (1.2") • 4459 (1.5")



Dominion Cabinet Knob
4490 (1") • 4491 (1.25")



Ornamental Cabinet Knob
4931 (1.5") • 4932 (2")



Spherical Cabinet Knob
4960 (1") • 4961 (1.25") • 4968 (1.5")

BRASS CABINET KNOBS



Palm Springs Cabinet
Knobs & Pulls



Oval Cabinet Pull
4479 (3") • 4480 (4")



Palm Springs Pull
4975 (3.75") • 4976 (6")



Severin Fayerman Cabinet Pull
4356 (3") • 4357 (4")



Arch Cabinet Pull
4496 (3.75") • 4497 (5") • 4448 (6") •
4450 (8")



Spindle Cabinet Pull
4475 (2.5") • 4476 (3.75")



Severin Fayerman Cabinet Pull
4361 (3") • 4362 (4")



Severin Fayerman Cabinet Pull
4366 (3") • 4367 (4")



Cabinet Pull
4672 (3") • 4674 (3.5") • 4676 (4")



Dominion Cabinet Pull
4487 (3") • 4488 (3.5") • 4489 (4")



Couture Cabinet Pull
4371 (3") • 4372 (4")



Couture Cabinet Pull
4376 (3") • 4377 (4")



Cabinet Pull
4966 (3") • 4967 (3.5") • 4964 (4")



Edinburgh Cabinet Pull
4611 (3.5") • 4612 (4")



Cabinet Pull
4423 (3") • 4424 (4")



Melon Cup Pull
4464 (3")



Deco Cabinet Pull
4437 (3.5") • 4438 (4")

Dimension notes center-to-center length

Dimension notes center-to-center length

Unless noted, entrance styles that begin with an 8 are for tubular preparation.



Crystal Cabinet Knob



Crystal Cabinet Knob
4301 (1.19") • 4302 (1.38")



Crystal Cabinet Knob
4318 (1.19") • 4319 (1.56")



Crystal Cabinet Knob
4354 (1.19")



Crystal Cabinet Knob
4324 (1.38") • 4325 (1.75")



Swarovski® Crystal Cabinet Knob
4334 (1.19") • 4336 (1.56")

CABINET PULLS



Crystal Cabinet Pull
4343 (3")



Crystal Cabinet Pull
4349 (3")

BACK PLATES



4613



4900



4901



4902



Severin Fayerman
Cabinet & Appliance Pulls



Severin Fayerman Appliance Pull
4358 (8") • 4359 (12") • 4360 (18")



Severin Fayerman Appliance Pull
4363 (8") • 4364 (12") • 4365 (18")



Severin Fayerman Appliance Pull
4368 (8") • 4369 (12") • 4370 (18")



Couture Appliance Pull
4373 (8") • 4374 (12") • 4375 (18")



Couture Appliance Pull
4378 (8") • 4379 (12") • 4380 (18")



Palm Springs Appliance Pull
4980 (15") • 4981 (18")

Dimension notes center-to-center length



2540 (5.5") • 2552 (8")
• 2553 (10")



2556 (5.75") • 2557 (7")



2560 (5.5")



2598 (6")



2602 (6.5")



2604 (10")



2564 (7")



2574 (8") • 2575 (10")



2576 (8") • 2578 (10")



2617 (6.5")



2673 (6")



2674 (8")



2584 (7")



2585 (5.5")



2597 (8")



2693 (6.5")



5340 (7.75")

Dimension notes center-to-center length, unless noted

Dimension notes center-to-center length, unless noted

Unless noted, entrance styles that begin with an 8 are for tubular preparation.



Colonial Kocker
0102 • 0103 (With Observascope)



Tahoe Kocker
0105



French Kocker
0106



Imperial Kocker
0116



"S" Kocker
0113



Ring Kocker
0195



Beveled Edge
2121 (3" x 12")



Nashville
2280-81 (3.5" x 15")



San Francisco
2282 (2.25" x 11.875")



Bristol
2285 (2.75" x 10.875")

Dimension notes width & length size (W x L)

Unless noted, entrance styles that begin with an 8 are for tubular preparation.

SWITCH PLATES

HINGES



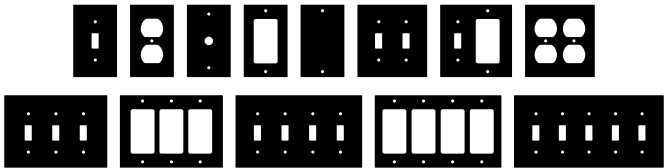
Colonial Switch Plate



Beveled Edge Switch Plate



Colonial Switch Plate



*Not all configurations available in all styles.



Square Corner
1030 (3") • 1035 (3.5") • 1040 (4") • 1045 (4.5")



Square Corner with Ball Bearings
1041 (4") • 1046 (4.5") • 1051 (5")



Radius Corner
1135 (3.5" x 0.625" R) • 1140 (4" x 0.625" R) • 1440 (4" x 0.25" R)



Ball 1080 • 1090
Urn 1091
Acorn 1092
Steeple 1083 • 1093

Dimension notes height & corner radius (H x R)

Unless noted, entrance styles that begin with an 8 are for tubular preparation.



Observascopes
0155 • 0156

BELL BUTTONS



Beaded
4850



Round
4851



House Numbers
9067x



Oval
4852



Rectangular
4853



Letter Box Plates
0012 • 0014 • 0015 • 0017



Oval
4858



Kick Plates
2000 • 2001

PULLS



Flush Ring
0392 (1.25" x 1.25")
0393 (1.625")
0394 (1.875" x 2.5")



Flush Ring
0395 (2.5" x 3.5")



Flush Pull
0458



Edge Pull
0465



Sash Lift
0470

DOOR STOPS



4000 (1" H)
4005 (1.25" H)
4010 (1.375" H)



4015 (0.5625" PROJ)
4252 (1" PROJ)



4045 (3" PROJ)
4055 (3.75" PROJ)
4155 (3.4" PROJ)



4293 (2.375" DIA)
4273 (1.75" DIA)

ROBE HOOKS



0742



0781



0782

SURFACE BOLTS



0321 (3") • 0322 (4")



0379 (6") • 0380 (8") • 0381 (12") • 0382 (18") • 0383 (24")

CREMONE BOLTS



Standard
8105



Ornamental
8106



Contemporary
8107



Flush Bolt
0626

FASTENERS & LOCKS



Door Guard
0250



Adjustable Ball Catch
0425 • 0426



Sash Lock
0452



Swivel Door Hook
0950 (2.5") • 0951 (3.5") • 0952 (5.5")

Dimensions note size

Unless noted, entrance styles that begin with an 8 are for tubular preparation.

With a wide spectrum of richly detailed, designer finishes and textures, Baldwin stands alone as the finish leader. Baldwin finishes are meticulously crafted of the finest materials with an ultra-hard lacquer that is durable and resistant to the effects of wear and tear.

TIER 1 FINISHES

- 003 - Lifetime (PVD) Polished Brass
- 031 - Non-lacquered Brass
- 033 - Vintage Brass
- 060* - Satin Brass & Brown
- 050* - Satin Brass & Black
- 151* - Antique Nickel
- 112* - Venetian Bronze
- 102* - Oil Rubbed Bronze
- 190 - Satin Black
- 264 - Satin Chrome
- 260 - Polished Chrome
- 150 - Satin Nickel

TIER 2 FINISHES

- 044 - Lifetime (PVD) Satin Brass
- 055 - Lifetime (PVD) Polished Nickel
- 056 - Lifetime (PVD) Satin Nickel
- 402 - Distressed Oil Rubbed Bronze
- 452* - Distressed Antique Nickel



*Hand-relieved finish variances: (050, 060, 112, 151, 412, 452) product finishes which are hand relieved may vary in luster, hue & appearance as a result of handcrafted variances in the final finishing step.

At Baldwin, we believe that quality should never be a compromise. From using the finest materials to crafting our hardware by hand, we are committed to creating high-quality hardware that not only looks beautiful and flawless but also endures the rigors of time.

BALDWIN®

19701 DA VINCI, LAKE FOREST, CALIFORNIA 92610
800.437.7448 · BALDWINHARDWARE.COM