

EMTEK[®]

ASSA ABLOY

Cabinet & Bath
HARDWARE

Experience a safer
and more open world



Make a statement, your statement.

Emtek is dedicated to helping bring your personal style to life. Cabinet hardware is more than a way to open, close and secure your space. To us, it is an integral part of a room's design theme. Cabinet hardware should make a statement, your statement.

With decorative products that are a cut above in terms of craftsmanship and design, each order is assembled with care in our Southern California facility.

Founded in 1981, Emtek has decades of experience designing and creating hardware solutions. We keep our finger on the pulse of the market and regularly release new designs. Our style is current, but we never forget about the classics. From traditional to contemporary, transitional or rustic, we have hardware to match every style.

In this brochure, you will find examples of Emtek's extensive range of cabinet and bath hardware. To see Emtek's complete product offerings, visit www.emtek.com or your local Emtek dealer.

Emtek is a part of ASSA ABLOY, the global leader in door opening solutions.

FINISH OPTIONS



Polished Brass
(US3)



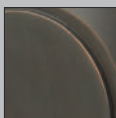
Polished Brass -
Lifetime (US3)



Satin Brass
(US4)



French Antique
(US7)



Oil Rubbed Bronze
(US10B)



Polished Nickel
(US14)



Polished Nickel -
Lifetime (US14)



Satin Nickel
(US15)



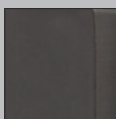
Pewter
(US15A)



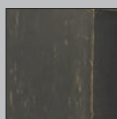
Flat Black
(US19)



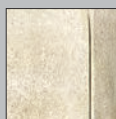
Polished Chrome
(US26)



Flat Black Bronze
Patina (FB)

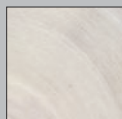


Medium Bronze
Patina (MB)

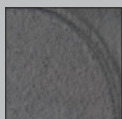


Tumbled White
Bronze (TWB)

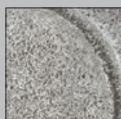
Bronze Patina is a living finish that will gracefully age, revealing the underlying bronze over time. Because of this characteristic, no finish warranty is offered on bronze patina products.



Brushed Stainless
Steel (SS)



Flat Black Steel
(FBS)



Satin Steel
(SWS)



Unlacquered Brass
(US3NL)

Unlacquered Brass (US3NL) is a custom, made-to-order finish. It is available with an upcharge, per item and requires an additional 2-3 day lead time. This living finish will gracefully age and evolve in appearance over time. Because of this characteristic, no finish warranty is offered on unlacquered brass products.

CABINET HARDWARE

INDUSTRIAL MODERN	6
MODERN RECTANGULAR	8
URBAN MODERN	10
CURVILINEAR	12
CONTEMPORARY	16
CARBON FIBER	18
MID CENTURY MODERN	20
EDGE PULL	22
CABINET LATCH	23
ART DECO	24
TRANSITIONAL HERITAGE	26
GEOMETRIC	28
TRADITIONAL	30
RIBBON & REED	34
ARTS & CRAFTS	36
CRYSTAL	38
STAINLESS STEEL	46
SANDCAST BRONZE	48
TUSCANY BRONZE	54
WROUGHT STEEL	58
APPLIANCE PULLS	60

BATH HARDWARE

MODERN	66
TRANSITIONAL	67
TRADITIONAL	68
SANDCAST BRONZE	70
TUSCANY BRONZE	72
WROUGHT STEEL	74
STAINLESS STEEL	75



a. Haydon Knob

Product Code	Dimension	Projection
86697	1 ¼"	1 ⅛"
86698	1 ¾"	1 ½"

b. Brandt Knob

Product Code	Dimension	Projection
86695	1 ¼"	1 ¼"
86696	1 ¾"	1 ½"

Finish Options:



US4



US10B



US14



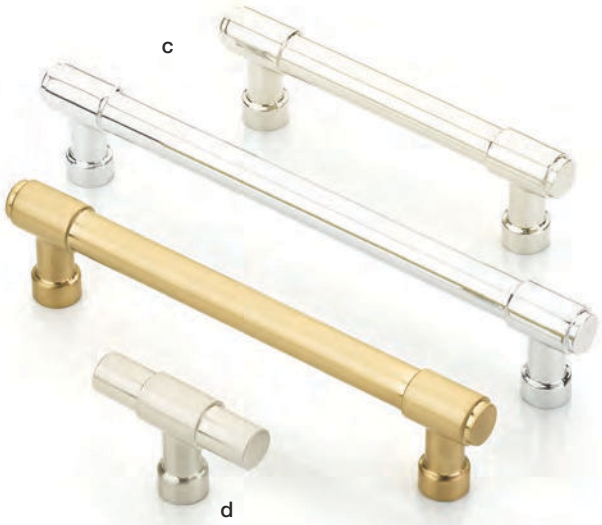
US15



US19



US26



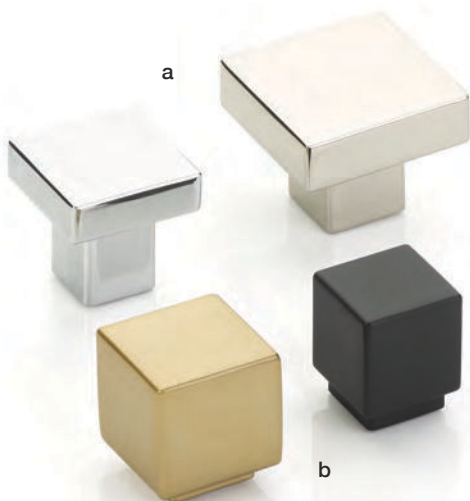
c. Jasper Pull

Product Code	C-to-C	Overall	Projection
86686	3 1/2"	4 3/8"	1 3/8"
86687	4"	4 7/8"	1 3/8"
86688	5"	5 7/8"	1 3/8"
86689	6"	6 7/8"	1 3/8"
86690	8"	8 7/8"	1 3/8"
86691	10"	10 7/8"	1 3/8"
86692	12"	12 7/8"	1 3/8"

d. Jasper Finger Pull

Product Code	Overall	Width	Projection
86699	2"	1/2"	1 3/8"

Industrial Modern



a. Hunter Knob

Product Code	Dimension	Projection
86702	1 ¼"	1 ¼"
86703	1 ⅝"	1 ¼"

b. Allerton Knob

Product Code	Dimension	Projection
86700	1"	1 ⅝"
86701	1 ⅛"	1 ¼"

Finish Options:



US4



US10B



US14



US15



US19



US26



c. Keaton Pull

Product Code	C-to-C	Overall	Projection
86714	3 ½"	4"	1 ½"
86715	4"	4 ½"	1 ½"
86716	5"	5 ½"	1 ½"
86717	6"	6 ½"	1 ½"
86718	8"	8 ½"	1 ½"
86719	10"	10 ½"	1 ½"
86720	12"	12 ½"	1 ½"

d. Warwick Pull

Product Code	C-to-C	Overall	Projection
86704	3 ½"	4"	1 ⅜"
86705	4"	4 ½"	1 ⅜"
86706	5"	5 ½"	1 ⅜"
86707	6"	6 ½"	1 ⅜"
86708	8"	8 ½"	1 ⅜"
86709	10"	10 ½"	1 ⅜"
86710	12"	12 ½"	1 ⅜"

e. Keaton Finger Pull

Product Code	Overall	Projection
86713	1 ½"	1 ½"

Modern Rectangular



a. Cinder Knob

Product Code	Dimension	C-to-C	Projection
86446	1 5/8"	1"	3/4"
86447	2 1/4"	1"	1"

b. Mod Hex Knob

Product Code	Dimension	Projection
86457	1 1/8"	1 1/4"
86458	1 1/2"	1 3/8"

c. District Knob

Product Code	Dimension	Projection
86448	1 1/4"	5/8"
86449	1 5/8"	5/8"

d. Freestone Knob

Product Code	Dimension	Projection
86450	1 1/4"	1 1/4"
86451	1 1/2"	1 1/4"

e. Mod Hex Extended Pull

Product Code	C-to-C	Overall	Projection
86684	3 1/2"	7"	1 1/4"
86685	6"	10 1/2"	1 3/8"

Finish Options:



US4



US10B



US14



US15



US19



US26



f. Mod Hex Pull

Product Code	C-to-C	Overall	Projection
86459	3 1/2"	5 3/8"	1 1/4"
86460	4"	5 3/4"	1 1/4"
86679	5"	7"	1 3/8"
86461	6"	8"	1 3/8"
86462	8"	10 1/4"	1 3/8"
86680	10"	12 1/4"	1 3/8"
86681	12"	14 1/4"	1 3/8"

g. Freestone Extended Pull

Product Code	C-to-C	Overall	Projection
86682	3 1/2"	7"	1 1/4"
86683	6"	10 1/2"	1 3/8"

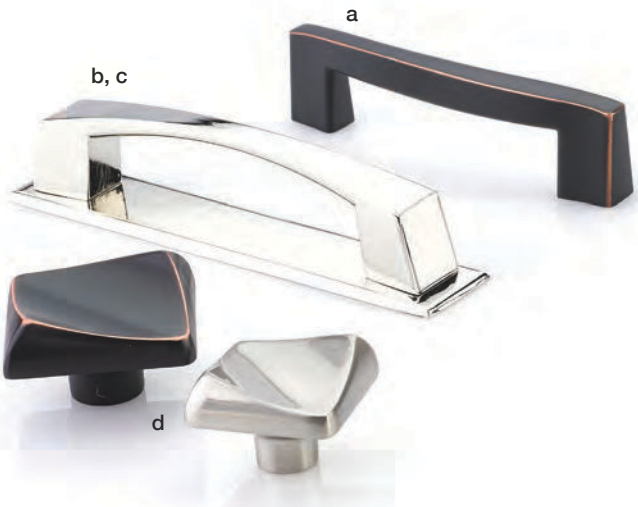
h. Freestone Pull

Product Code	C-to-C	Overall	Projection
86453	3 1/2"	4 3/4"	1 1/4"
86454	4"	5 1/4"	1 1/4"
86676	5"	6 3/4"	1 3/8"
86455	6"	7 3/4"	1 3/8"
86456	8"	10 1/2"	1 3/8"
86677	10"	12 1/2"	1 3/8"
86678	12"	14 1/2"	1 3/8"

i. Freestone Finger Pull

Product Code	Overall	Width	Projection
86452	1 7/8"	3/8"	1 1/8"

Urban Modern



a. Bezier Pull

Product Code	C-to-C	Overall	Projection
86412	3 1/2"	4 1/8"	1"
86413	4"	4 3/4"	1 1/8"
86414	6"	6 3/4"	1 1/8"

b. Sweep Pull

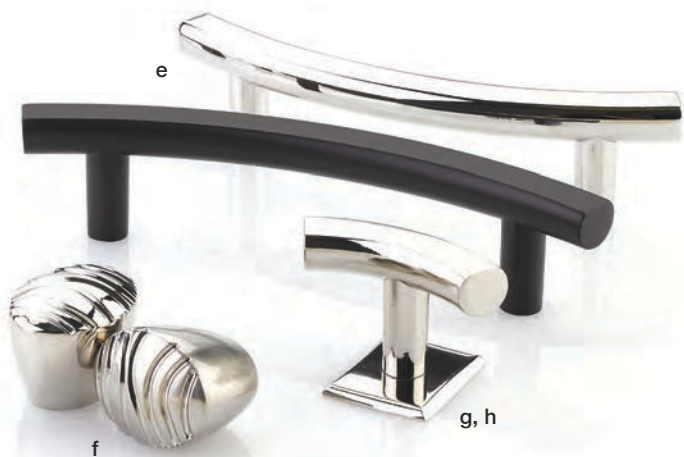
Product Code	C-to-C	Overall	Projection
86406	3 1/2"	4 1/8"	1"
86407	4"	4 5/8"	1"
86486	5"	5 3/4"	1"
86408	6"	6 3/4"	1"
86409	8"	9 1/4"	1"
86487	10"	11 3/8"	1 1/8"
86488	12"	13 1/2"	1 1/4"

c. Neos Back Plate for Pull

Product Code	C-to-C	Overall
86419	4"	5 1/8" x 1"

d. Bezier Knob

Product Code	Dimension	Projection
86410	1 1/4"	1"
86411	1 5/8"	1"



e. Curve Bar Pull

Product Code	C-to-C	Overall	Projection
86416	3 1/2"	5"	1 1/4"
86417	4"	5 5/8"	1 1/4"
86418	6"	7 3/4"	1 1/4"

f. Sweep Knob

Product Code	Dimension	Projection
86405	1 1/4"	1"

g. T-Curve Pull

Product Code	Dimension	Projection
86415	2"	1 1/4"

h. Neos Back Plate for Knob

Product Code	Overall	Thickness
86420	1 1/4" x 1"	1/8"

Finish Options:



US10B



US14



US15



US19



US26

Curvilinear



a. Trail Pull

Product Code	C-to-C	Overall	Projection
86161	3"	3 5/8"	1 3/8"
86162	3 1/2"	4 1/4"	1 3/8"
86163	4"	4 5/8"	1 3/8"
86272	5"	5 5/8"	1 3/8"
86164	6"	6 5/8"	1 3/8"
86165	8"	8 5/8"	1 3/8"
86273	10"	10 5/8"	1 3/8"
86166	12"	12 5/8"	1 3/8"
86274	16"	16 5/8"	1 3/8"

b. Trinity Pull

Product Code	C-to-C	Overall	Projection
86263	3"	3 1/2"	1"
86264	3 1/2"	4"	1"
86265	4"	4 1/2"	1"
86482	5"	5 1/2"	1"
86266	6"	6 1/2"	1"
86438	8"	8 1/2"	1"
86267	10"	10 1/2"	1"
86483	12"	12 1/2"	1"



c. Metric Knob

Product Code	Dimension	Projection
86268	1"	1 1/8"
86269	1 1/8"	1 3/8"

d. Cone Knob

Product Code	Dimension	Projection
86261	1"	1 1/8"
86262	1 1/8"	1 3/8"

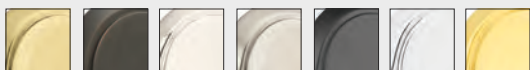
e. Finger Pull

Product Code	Dimension	Projection
86150	7/8"	1"
86151	1"	1 1/4"

f. Trail Knob

Product Code	Dimension	Projection
86271	2"	1 3/8"

Finish Options:



US4

US10B

US14

US15

US19

US26

US3NL*

* US3NL is NOT available for Trinity Pull.

Contemporary



a. Bar Knob

Product Code	Dimension	Projection
86357	2"	1 1/4"

b. Globe Knob

Product Code	Dimension	Projection
86152	1 1/8"	1 1/2"

c. Orbit Pull

Product Code	C-to-C	Overall	Projection
86256	3"	3 3/8"	1"
86257	3 1/2"	3 7/8"	1"
86258	4"	4 3/8"	1"
86259	6"	6 3/8"	1"
86260	10"	10 3/8"	1"

d. Ring Knob

Product Code	C-to-C	Projection
86270	1"	1 1/4"



e. Bar Pull

Product Code	C-to-C	Overall	Projection
86358	3"	5"	1 1/4"
86359	3 1/2"	5 1/2"	1 1/4"
86360	4"	6 1/2"	1 1/4"
86361	5"	7 1/2"	1 1/4"
86362	6"	8 1/2"	1 1/4"
86363	8"	10 1/2"	1 1/4"
86364	10"	12 1/2"	1 1/4"
86365	12"	14 1/2"	1 1/4"
86366	16"	18 1/2"	1 1/4"
86367	24"	26 1/2"	1 1/4"

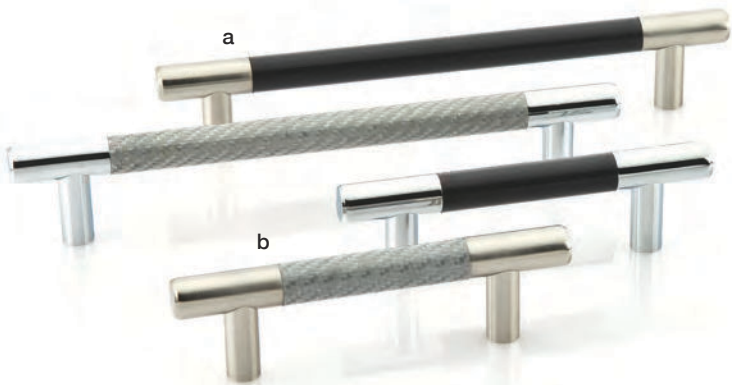
f. Arch Pull

Product Code	C-to-C	Overall	Projection
86153	3"	4 3/4"	1 1/8"
86154	3 1/2"	5 1/4"	1 1/8"
86155	4"	5 3/4"	1 1/8"
86251	6"	8 5/8"	1 1/4"

Finish Options:



Contemporary

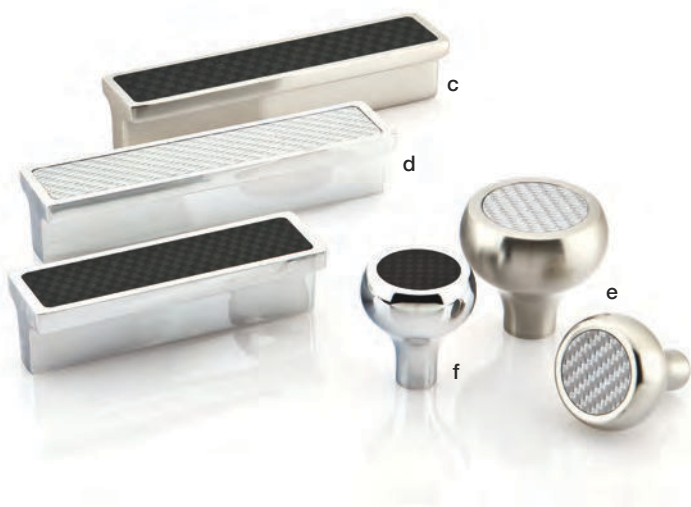


a. Carbon Fiber Bar Pull - Black

Product Code	C-to-C	Overall	Projection
86376	3"	4 1/2"	1 1/4"
86377	3 1/2"	5"	1 1/4"
86378	4"	5 1/2"	1 1/4"
86379	5"	6 1/2"	1 1/4"
86380	6"	7 1/2"	1 1/4"
86381	8"	9 1/2"	1 1/4"
86382	10"	11 1/2"	1 1/4"
86383	12"	13 1/2"	1 1/4"
86384	16"	17 1/2"	1 1/4"

b. Carbon Fiber Bar Pull - Silver

Product Code	C-to-C	Overall	Projection
86385	3"	4 1/2"	1 1/4"
86386	3 1/2"	5"	1 1/4"
86387	4"	5 1/2"	1 1/4"
86388	5"	6 1/2"	1 1/4"
86389	6"	7 1/2"	1 1/4"
86390	8"	9 1/2"	1 1/4"
86391	10"	11 1/2"	1 1/4"
86392	12"	13 1/2"	1 1/4"
86393	16"	17 1/2"	1 1/4"



c. Carbon Fiber Bin Pull - Black

Product Code	C-to-C	Overall	Projection
86372	3"	3 3/8"	1"
86373	4"	4 3/8"	1"

d. Carbon Fiber Bin Pull - Silver

Product Code	C-to-C	Overall	Projection
86374	3"	3 3/8"	1"
86375	4"	4 3/8"	1"

e. Carbon Fiber Knob - Silver

Product Code	Dimension	Projection
86370	1 1/4"	1 1/4"
86371	1 5/8"	1 1/2"

f. Carbon Fiber Knob - Black

Product Code	Dimension	Projection
86368	1 1/4"	1 1/4"
86369	1 5/8"	1 1/2"

Finish Options:



US15



US26

Carbon Fiber



a. Cadet Knob

Product Code	Dimension	Projection
86321	1"	1 1/8"
86322	1 1/4"	1 1/4"
86323	1 3/4"	1 1/2"

b. Atomic Knob

Product Code	Dimension	Projection
86314	1"	1"
86315	1 1/4"	1 1/4"
86316	1 5/8"	1 1/2"

c. Basin Knob

Product Code	Dimension	Projection
86317	1 1/4"	3/4"
86318	1 5/8"	1"

d. Podium Knob

Product Code	Dimension	Projection
86319	1 1/4"	1 1/8"
86320	1 3/4"	1 3/8"



e. Bauhaus Pull

Product Code	C-to-C	Overall	Projection
86324	3"	3 3/8"	1 1/8"
86325	4"	4 3/8"	1 1/8"

f. Dane Pull

Product Code	C-to-C	Overall	Projection
86309	3"	3 1/4"	1 1/2"
86310	3 1/2"	3 3/4"	1 1/2"
86311	4"	4 1/4"	1 1/2"
86312	6"	6 1/4"	1 1/2"
86313	10"	10 1/4"	1 1/2"

Finish Options:



US10B



US14



US15



US19



US26

Mid Century Modern



Edge Pull

a. Cabinet Edge Pull

Product Code	C-to-C	Overall	Projection
87160	1"	1 1/2"	1 3/4"
87100	3"	4 1/4"	1 3/4"
87110	4"	5 1/4"	1 3/4"
87120	6"	7 1/4"	1 3/4"
87130	8"	9 1/4"	1 3/4"
87140	10"	11 1/4"	1 3/4"
87150	12"	13 1/4"	1 3/4"

Finish Options:



US4



US10B



US14



US15



US19



US26



b. Cabinet Latch

Product Code	Overall	Projection
2270	2 1/4" x 2"	1 3/8"

Cabinet Latch

Finish Options:



US3



US4



US7



US10B



US14



US15



US15A



US19



US26



US3NL



a. Art Deco Pull

Product Code	C-to-C	Overall	Projection
86422	3 1/2"	4 3/8"	1 1/8"
86423	4"	4 7/8"	1 1/8"

b. Alexander Pull

Product Code	C-to-C	Overall	Projection
86424	3 1/2"	3 7/8"	1 1/8"
86425	4"	4 3/8"	1 1/8"
86484	5"	5 3/8"	1 1/8"
86426	6"	6 3/8"	1 1/8"
86427	8"	8 3/8"	1 1/8"
86485	10"	10 3/8"	1 1/8"
86479	12"	12 3/8"	1 1/8"

c. Rectangular Back Plate for Pull

Product Code	C-to-C	Overall	Thickness
86435	4"	5 1/4" x 1"	1/8"

d. Square Back Plate for Knob

Product Code	Dimension	Thickness
86434	1 1/8"	1/8"



e. Tribeca Pull

Product Code	C-to-C	Overall	Projection
86428	3 1/2"	5 1/2"	1 1/4"
86429	4"	6"	1 1/4"
86489	5"	7"	1 1/4"
86430	6"	8"	1 1/4"
86431	8"	10"	1 1/4"
86490	10"	12"	1 3/8"
86491	12"	14"	1 3/8"

f. Newport Knob

Product Code	Dimension	Projection
86432	1 1/4"	1 1/4"
86433	1 5/8"	1 1/2"

g. Art Deco Knob

Product Code	Dimension	Projection
86421	1 1/4"	1 1/4"

Finish Options:



US4



US10B



US14



US15



US19



US26

Art Deco



a. Overland Knob

Product Code	Dimension	Projection
86467	1 1/4"	1 1/4"
86468	1 3/4"	1 1/2"

b. Westwood Pull

Product Code	C-to-C	Overall	Projection
86475	3 1/2"	4 1/4"	1 1/8"
86476	4"	4 5/8"	1 1/8"
86477	6"	6 5/8"	1 1/8"
86478	8"	8 5/8"	1 1/4"

c. Prosser Knob

Product Code	Dimension	Projection
86469	1"	1 1/4"
86470	1 1/8"	1 3/8"

Finish Options:



US4



US10B



US14



US15



US19



US26



d. Blythe Pull

Product Code	C-to-C	Overall	Projection
86471	3 1/2"	4 1/8"	1 1/4"
86472	4"	4 3/4"	1 1/4"
86473	6"	6 5/8"	1 3/8"
86474	8"	8 5/8"	1 1/2"

e. Midvale Knob

Product Code	Dimension	Projection
86465	1 1/4"	1"
86466	1 3/4"	1 1/4"

f. Glendon Knob

Product Code	Dimension	Projection
86463	1 1/4"	1 1/4"
86464	1 5/8"	1 1/2"

Transitional Heritage



a. Geometric Rectangular Pull

Product Code	C-to-C	Overall	Projection
86299	3"	4 1/4"	1 1/8"
86300	3 1/2"	4 5/8"	1 1/8"
86301	4"	5 1/4"	1 1/8"
86492	5"	6 1/4"	1 1/8"
86302	6"	7 1/4"	1 1/8"
86303	10"	11 1/4"	1 1/8"
86493	12"	13 1/4"	1 1/8"

Finish Options:



US4



US10B



US14



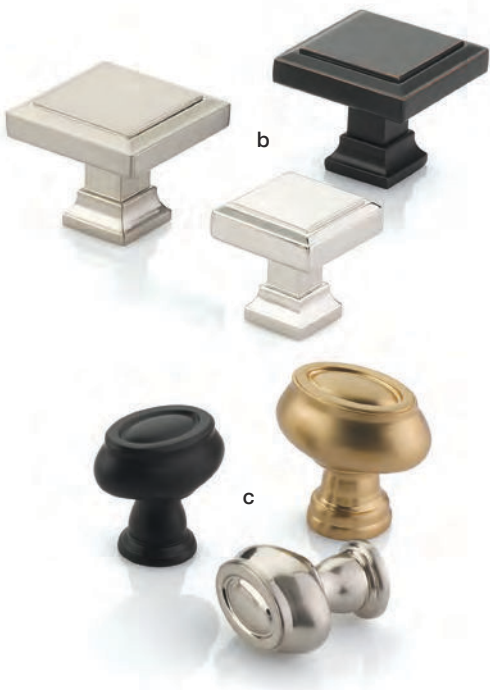
US15



US19



US26



b. Geometric Square Knob

Product Code	Dimension	Projection
86295	1 1/4"	1 1/4"
86296	1 5/8"	1 3/8"

c. Geometric Oval Knob

Product Code	Dimension	Projection
86304	1 1/4"	1 1/4"
86305	1 1/2"	1 1/2"
86306	1 3/4"	1 1/2"

Geometric



a. Hexagon Knob

Product Code	Dimension	Projection
86119	1 1/8"	1"
86120	1 3/8"	1 3/8"
86204	1 7/8"	1 3/4"

b. Melon Knob

Product Code	Dimension	Projection
86121	1"	1"
86122	1 1/4"	1 1/4"
86203	1 3/4"	1 3/4"



c. Rope Knob

Product Code	Dimension	Projection
86112	1"	1"
86113	1 1/4"	1 1/4"
86202	1 3/4"	1 1/2"

d. Rope Pull

Product Code	C-to-C	Overall	Projection
86125	3"	3 3/4"	1 1/4"
86126	3 1/2"	4 1/4"	1 1/4"
86127	4"	4 3/4"	1 1/4"
86247	6"	6 3/4"	1 1/4"

Finish Options:



US3



US7



US10B



US14



US15



US15A



US19



US26



US3NL

Traditional



a. Providence Knob

Product Code	Dimension	Projection
86013	1"	1"
86014	1 1/4"	1 1/8"
86027	1 3/4"	1 1/2"

b. Waverly Knob

Product Code	Dimension	Projection
86114	1"	1"
86115	1 1/4"	1 1/8"
86201	1 3/4"	1 1/2"

c. Norwich Knob

Product Code	Dimension	Projection
86610	1 1/4"	1 1/8"
86611	1 5/8"	1 1/2"

Finish Options:



US3



US7



US10B



US14



US15



US15A



US19



US26



US3NL



d. Cup Pull

Product Code	C-to-C	Overall	Height	Projection
86123	3"	4 1/4"	1 1/4"	1 1/8"
86173	4"	5 1/4"	1 1/2"	1 1/2"

e. Wire Pull

Product Code	C-to-C	Overall	Projection
86131	3"	3 1/4"	1 1/4"
86132	3 1/2"	3 3/4"	1 1/4"
86133	4"	4 1/4"	1 1/4"
86249	6"	6 1/4"	1 1/4"

f. Spindle Pull

Product Code	C-to-C	Overall	Projection
86128	3"	3 1/2"	1 1/4"
86129	3 1/2"	4 1/8"	1 1/4"
86130	4"	4 1/2"	1 1/4"
86248	6"	6 1/2"	1 1/4"

g. Egg Knob

Product Code	Dimension	Projection
86015	1"	1"
86016	1 1/4"	1 1/4"
86124	1 3/4"	1 5/8"

Traditional



a. Ribbon & Reed Fixed Pull - Regal

Product Code	C-to-C	Overall	Projection
86288	3"	4 1/8"	1 1/2"
86289	3 1/2"	4 5/8"	1 1/2"
86290	4"	5 1/8"	1 1/2"
86291	6"	7 1/4"	1 1/2"
86292	10"	11 1/4"	1 1/2"

b. Ribbon & Reed Knob

Product Code	Dimension	Projection
86277	1 1/4"	1 1/8"
86278	1 3/4"	1 1/2"

Finish Options:



US3



US7



US10B



US15



US15A



US26



US3NL



c. Ribbon & Reed Bin Pull

Product Code	C-to-C	Overall	Height	Projection
86281	3"	3 7/8"	1 5/8"	1 1/8"
86282	4"	5 1/2"	1 5/8"	1 1/4"

d. Ribbon & Reed Fixed Pull - Estate

Product Code	C-to-C	Overall	Projection
86283	3"	3 5/8"	1 1/4"
86284	3 1/2"	4 1/8"	1 1/4"
86285	4"	4 5/8"	1 1/4"
86286	6"	6 5/8"	1 1/4"
86287	10"	10 5/8"	1 3/8"

e. Ribbon & Reed Finger Knob

Product Code	Dimension	Projection
86279	1 3/4"	1 1/4"
86280	3"	1 5/8"

f. Ribbon & Reed Back Plate for Pull

Product Code	Dimension	Overall	Thickness
86294	4"	6 3/4" x 1 1/4"	1/8"

g. Ribbon & Reed Back Plate for Knob

Product Code	Overall	Thickness
86293	2 1/2" x 1 1/4"	1/8"

Ribbon & Reed



a. Round Dimpled Knob

Product Code Dimension Projection

86037	1 1/4"	1 1/4"
86213	1 3/4"	1 1/2"

b. Mortise & Tenon Pull

Product Code C-to-C Overall Projection

86043	3"	3 3/8"	1 1/8"
86044	3 1/2"	3 7/8"	1 1/8"
86045	4"	4 3/8"	1 1/8"
86276	6"	6 3/8"	1 1/8"

c. Square Dimpled Knob

Product Code Dimension Projection

86038	1"	3/4"
86039	1 1/4"	1"
86212	1 3/4"	1 1/8"

Finish Options:



US4



US10B



US15



US3NL



d. Hammered Bin Pull

Product Code	C-to-C	Overall	Height	Projection
86049	3"	3 1/2"	1 1/2"	1"

e. Hammered Pull

Product Code	C-to-C	Overall	Projection
86046	3"	3 7/8"	1"
86047	3 1/2"	4 3/8"	1"
86048	4"	4 7/8"	1"

f. Hammered Oval Pull

Product Code	Dimension
86041	3" x 1 3/4"

g. Hammered Ring Pull

Product Code	Overall
86040	1 3/4" x 1 1/2"

h. Hammered Vertical Ring Pull

Product Code	Overall
86042	1 1/4" x 3 1/2"



a. Lido Colored Crystal Knob

Cyan	Smoke	Black	Tangelo	Dimension	Projection
Product Code	Product Code	Product Code	Product Code		
86552	86554	86558	86560	1 3/8"	1 3/8"
86553	86555	86559	86561	1 5/8"	1 1/2"

b. Brookmont Colored Crystal Knob

Cyan	Smoke	Black	Tangelo	Dimension	Projection
Product Code	Product Code	Product Code	Product Code		
86537	86540	86546	86549	1"	1 1/4"
86538	86541	86547	86550	1 1/4"	1 1/2"
86539	86542	86548	86551	1 5/8"	1 3/4"

c. Bristol Colored Crystal Knob

Cyan	Smoke	Black	Tangelo	Dimension	Projection
Product Code	Product Code	Product Code	Product Code		
86527	86529	86533	86535	1"	1 3/8"
86528	86530	86534	86536	1 1/4"	1 5/8"

Brass Options:



Colored Crystal



a. Grayson Crystal Knob

Product Code	Dimension	Projection
86569	1 1/4"	1 1/8"
86570	1 3/4"	1 1/4"

b. Lido Crystal Knob

Product Code	Dimension	Projection
86403	1 3/8"	1 3/8"
86404	1 5/8"	1 1/2"

c. Bristol Crystal Knob

Product Code	Dimension	Projection
86394	1"	1 3/8"
86395	1 1/4"	1 5/8"

Crystal



d. Brookmont Crystal Knob

Product Code	Dimension	Projection
86396	1"	1 1/4"
86397	1 1/4"	1 1/2"
86398	1 5/8"	1 3/4"

e. Forza Crystal Knob

Product Code	Dimension	Projection
86565	1 1/4"	1 1/4"

f. Juneau Crystal Knob

Product Code	Dimension	Projection
86562	1 1/8"	1 3/8"

Brass Options:



US3



US4



US7



US10B



US14



US15



US15A



US19



US26



US3NL



a. Providence Crystal Knob

Product Code	Dimension	Projection
86567	1 $\frac{3}{8}$ "	1 $\frac{3}{8}$ "
86568	1 $\frac{3}{4}$ "	1 $\frac{1}{2}$ "

b. Hampton Crystal Knob

Product Code	Dimension	Projection
86401	1 $\frac{1}{4}$ "	1 $\frac{3}{8}$ "
86402	1 $\frac{3}{4}$ "	1 $\frac{5}{8}$ "

Crystal



c. Deco Crystal Knob

Product Code	Dimension	Projection
86563	1 1/4"	1 3/8"
86564	1 5/8"	1 5/8"

d. Windsor Crystal Knob

Product Code	Dimension	Projection
86566	1 5/8" x 1 1/8"	1 1/4"

e. Lowell Crystal Knob

Product Code	Dimension	Projection
86571	1 3/8"	1 1/4"

Brass Options:



US3



US4



US7



US10B



US14



US15



US15A



US19



US26



US3NL



a. Old Town Wardrobe Crystal Knob

Product Code	Dimension	Projection
86028	1 3/4"	1 1/2"

b. Old Town Crystal Knob

Product Code	Dimension	Projection
86010	1"	7/8"
86011	1 1/4"	1 1/8"

c. Georgetown Crystal Knob

Product Code	Dimension	Projection
86399	1 1/4"	1 1/2"
86400	1 3/4"	1 3/4"

Brass Options:



US3



US4



US7



US10B



US14



US15



US15A



US19



US26



US3NL

Crystal



d. Astoria Crystal Knob*

Product Code	Dimension	Projection
86017	1 1/8"	1 1/8"
86210	1 1/2"	1 1/2"

* Finish options are not available for this product.

e. Diamond Wardrobe Crystal Knob

Product Code	Dimension	Projection
86209	1 3/4"	2"

f. Diamond Crystal Knob

Product Code	Dimension	Projection
86003	1"	1 3/8"
86012	1 1/4"	1 7/8"

Brass Options:



US3



US4



US7



US10B



US14



US15



US15A



US19



US26



US3NL



a. Bar Knob

Product Code	Dimension	Projection
S62001SS	2"	1 1/4"

b. Dome Knob

Product Code	Dimension	Projection
S61113SS	1 1/4"	1 1/4"

c. Mushroom Knob

Product Code	Dimension	Projection
S61213SS	1 1/4"	1 1/4"

d. Leather Bar Pull

Product Code	C-to-C	Overall	Projection
S86521	3"	5"	1 3/8"
S86522	3 1/2"	5 1/2"	1 3/8"
S86523	4"	6 1/2"	1 3/8"
S86524	6"	8 1/2"	1 3/8"
S86525	8"	10 1/2"	1 3/8"
S86526	12"	14 1/2"	1 3/8"

Finish Option:



Stainless Steel
(SS)

Leather Options:



Black
(BLKST)



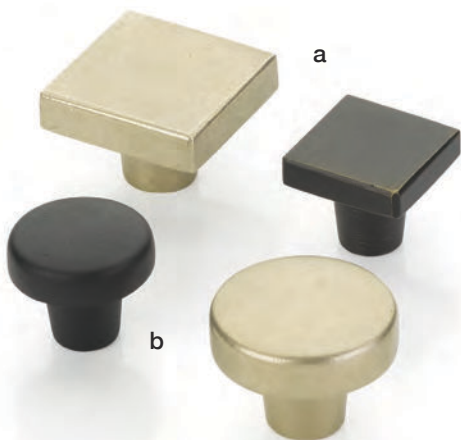
e. Bar Pull

Product Code	C-to-C	Overall	Projection
S62002SS	3"	5"	1 1/4"
S62003SS	3 1/2"	5 1/2"	1 1/4"
S62004SS	4"	6 1/2"	1 1/4"
S62005SS	5"	7 1/2"	1 1/4"
S62006SS	6"	8 1/2"	1 1/4"
S62007SS	8"	10 1/2"	1 1/4"
S62008SS	10"	12 1/2"	1 1/4"
S62009SS	12"	14 1/2"	1 1/4"
S62010SS	16"	18 1/2"	1 1/4"
S62011SS	24"	26 1/2"	1 1/4"
S62012SS	28"	30 1/2"	1 1/4"
S62013SS	32"	34 1/2"	1 1/4"
S62014SS	36"	38 1/2"	1 1/4"

f. Delta Pull

Product Code	C-to-C	Overall	Projection
S60030SS	3"	3 1/2"	1"
S60035SS	3 1/2"	4"	1"
S60040SS	4"	4 1/2"	1"

Stainless Steel



a. Rustic Modern Square Knob

Product Code	Dimension	Projection
86662	1 ¼"	1 ⅛"
86663	1 ⅝"	1 ¼"

b. Rustic Modern Round Knob

Product Code	Dimension	Projection
86660	1 ⅜"	1 ¼"
86661	1 ¾"	1 ⅜"

Finish Options:



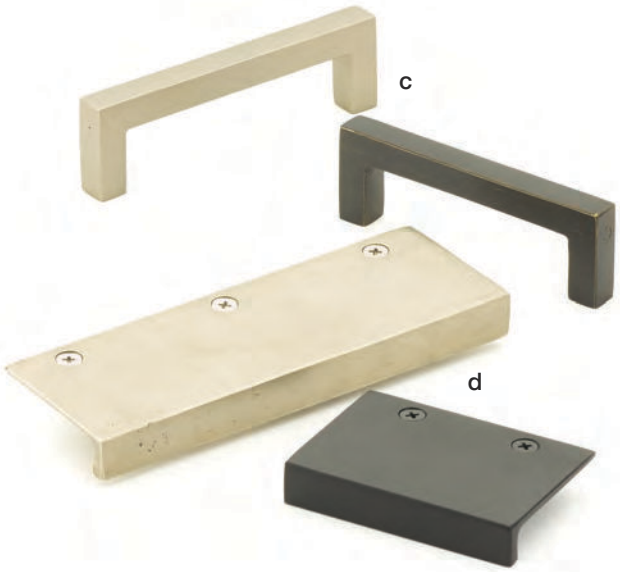
FB



MB



TWB



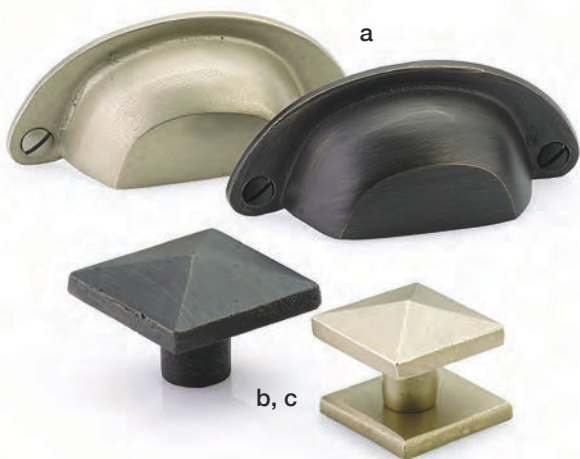
c. Rustic Modern Pull

Product Code	C-to-C	Overall	Projection
86667	3 1/2"	4"	1 3/8"
86668	4"	4 1/2"	1 3/8"
86669	5"	5 1/2"	1 3/8"
86670	6"	6 1/2"	1 3/8"
86671	8"	8 1/2"	1 3/8"
86672	10"	10 1/2"	1 3/8"
86673	12"	12 1/2"	1 3/8"

d. Rustic Modern Edge Pull

Product Code	C-to-C	Overall	Projection
86664	1 1/2"	3"	2 1/8"
86665	4 1/2"	6"	2 1/8"
86666	10 1/2"	12"	2 1/8"

Rustic Modern



a. Ranch Bin Pull

Product Code	C-to-C	Overall	Projection
86326	3"	3 1/2"	1"
86327	4"	4 5/8"	1"

b. Square Knob

Product Code	Dimension	Projection
86145	1 1/4"	1"
86146	1 5/8"	1 1/8"

c. Square Back Plate for Knob

Product Code	Dimension	Thickness
86342	1 1/4"	1/8"

Finish Options:



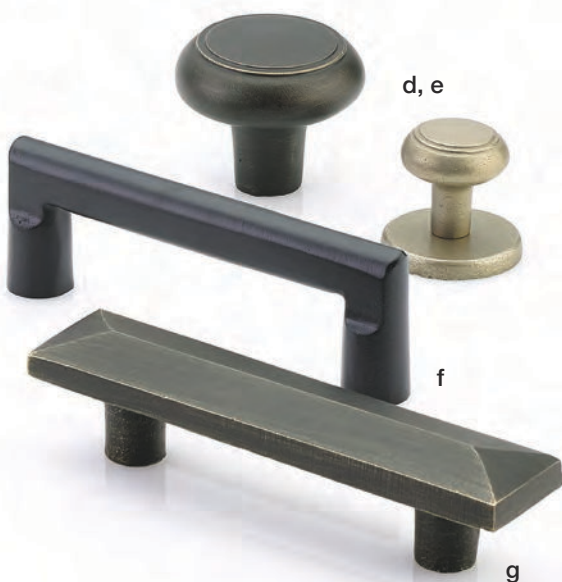
FB



MB



TWB



d. Barn Knob

Product Code	Dimension	Projection
86338	1"	1"
86339	1 1/4"	1 1/8"
86340	1 3/4"	1 1/2"

e. Round Back Plate for Knob

Product Code	Dimension	Thickness
86341	1 1/4"	1/8"

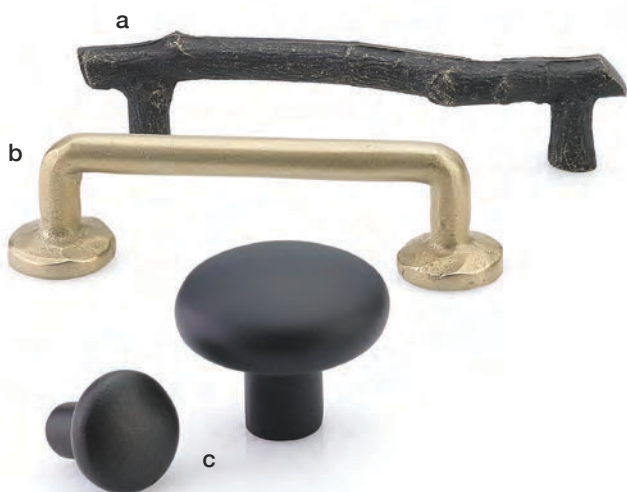
f. Rail Pull

Product Code	C-to-C	Overall	Projection
86332	3"	3 1/2"	1 1/4"
86333	3 1/2"	4 1/8"	1 1/4"
86334	4"	4 1/2"	1 1/4"
86335	6"	6 1/2"	1 3/8"
86336	8"	8 1/2"	1 3/8"
86337	10"	10 1/2"	1 3/8"

g. Pyramid Pull

Product Code	C-to-C	Overall	Projection
86328	3"	4 1/2"	1"
86329	3 1/2"	5"	1"
86330	4"	5 1/2"	1"
86331	6"	7 1/2"	1 1/8"

Sandcast Bronze



a. Twig Pull

Product Code	C-to-C	Overall	Projection
86061	3"	4 1/8"	1 1/4"
86062	3 1/2"	4 1/2"	1 1/4"
86063	4"	4 7/8"	1 1/4"
86252	6"	7 3/8"	1 1/4"

b. Rod Pull

Product Code	C-to-C	Overall	Projection
86054	3"	4"	1 1/4"
86055	3 1/2"	4 1/2"	1 1/4"
86056	4"	5"	1 1/4"
86253	6"	7"	1 1/4"

c. Round Knob

Product Code	Dimension	Projection
86057	1"	1"
86058	1 1/4"	1 1/8"
86117	1 3/4"	1 1/2"



d. Bin Pull

Product Code	C-to-C	Overall	Height	Projection
86051	3"	3 3/8"	1 1/2"	1"
86050	4"	4 1/2"	1 5/8"	1"

e. Egg Knob

Product Code	Dimension	Projection
86052	1"	1"
86053	1 1/4"	1 1/4"
86217	1 3/4"	1 5/8"

f. Round Back Plate for Knob

Product Code	Dimension	Thickness
86341	1 1/4"	1/8"

Finish Options:



FB



MB



TWB

Sandcast Bronze



a. Twist Pull

Product Code	C-to-C	Projection
86103	3"	1 1/4"
86104	3 1/2"	1 1/4"
86105	4"	1 1/4"
86238	6"	1 3/8"
86239	8"	1 3/8"
86240	10"	1 3/8"

b. Back Plate for Pull

Product Code	C-to-C	Overall
86235	3"	5 1/4" x 7/8"
86236	3 1/2"	5 3/4" x 7/8"
86237	4"	6 1/4" x 7/8"

c. Twist Finger Knob

Product Code	Dimension	Projection
86097	1 3/4"	1 1/4"
86098	3"	1 3/4"

d. Twist Round Knob

Product Code	Dimension	Projection
86244	1"	1 1/8"
86245	1 1/4"	1 1/4"
86246	1 3/4"	1 1/2"

e. Back Plate for Knob

Product Code	Dimension	Width
86234	2 1/4"	7/8"

Finish Options:



FB



MB



f. Fluted Bin Pull

Product Code	C-to-C	Overall	Projection
86232	3"	3 3/8"	1"
86233	4"	4 3/8"	1"

g. Fluted Round Knob

Product Code	Dimension	Projection
86229	1"	1 1/8"
86230	1 1/4"	1 1/4"
86231	1 3/4"	1 1/2"

h. Fluted Finger Knob

Product Code	Dimension	Projection
86227	1 3/4"	1 1/4"
86228	3"	1 5/8"

i. Fluted Pull

Product Code	C-to-C	Projection
86218	3"	1 1/2"
86219	3 1/2"	1 1/2"
86220	4"	1 1/2"
86221	6"	1 1/2"
86222	8"	1 1/2"
86223	10"	1 1/2"

Tuscany Bronze



a. Tuscany Bin Pull

Product Code	C-to-C	Overall	Projection
86099	3"	3 1/2"	1"
86199	4"	4 3/8"	1"

b. Tuscany Ribbed Pull

Product Code	C-to-C	Overall	Projection
86100	3"	3 5/8"	1"
86101	3 1/2"	4 1/8"	1"
86102	4"	4 5/8"	1"
86255	6"	6 5/8"	1"

c. Tuscany Petal Knob

Product Code	Dimension	Projection
86095	1"	1"
86096	1 1/4"	1 1/4"
86214	1 3/4"	1 1/2"



d. Tuscany Octagon Knob

Product Code	Dimension	Projection
86137	1"	1"
86138	1 1/4"	1 1/4"
86215	1 3/4"	1 5/8"

e. Tuscany Round Knob

Product Code	Dimension	Projection
86091	1"	1"
86092	1 1/4"	1 1/4"
86116	1 3/4"	1 1/2"

f. Tuscany Egg Knob

Product Code	Dimension	Projection
86093	1"	1"
86094	1 1/4"	1 1/4"
86143	1 3/4"	1 1/2"

Finish Options:



FB



MB

Tuscany Bronze



a. Wrought Steel Bastogne Knob

Product Code	Dimension	Projection
76017	2 ³ / ₈ "	1 ¹ / ₂ "
76018	3 ³ / ₈ "	2"

b. Wrought Steel Flanders Knob

Product Code	Dimension	Projection
76011	1 ¹ / ₄ "	2"
76012	1 ¹ / ₂ "	2 ¹ / ₈ "
76042	2"	2 ¹ / ₂ "

c. Wrought Steel Lafayette Pull

Product Code	C-to-C	Overall	Projection
76025	3"	3 ³ / ₈ "	1 ¹ / ₂ "
76019	3 ¹ / ₂ "	3 ⁷ / ₈ "	1 ¹ / ₂ "
76020	4"	4 ³ / ₈ "	1 ¹ / ₂ "
76047	6"	6 ³ / ₈ "	1 ¹ / ₂ "

Finish Options:



FBS



SWS



d. Wrought Steel Petal Knob

Product Code	Dimension	Projection
76013	1"	1 1/4"
76014	1 1/4"	1 3/8"
76044	1 3/4"	1 3/4"

e. Wrought Steel Normandy Pull

Product Code	C-to-C	Overall	Projection
76027	3"	3 3/8"	1 1/2"
76023	3 1/2"	3 7/8"	1 1/2"
76024	4"	4 3/8"	1 1/2"
76046	6"	6 3/8"	1 1/2"

f. Wrought Steel San Carlos Pull

Product Code	C-to-C	Overall	Projection
76026	3"	3 1/4"	1 1/2"
76021	3 1/2"	3 3/4"	1 1/2"
76022	4"	4 1/4"	1 1/2"
76045	6"	6 1/4"	1 1/2"

g. Wrought Steel Brittany Knob

Product Code	Dimension	Projection
76015	1"	1 1/8"
76016	1 1/4"	1 3/8"
76043	1 3/4"	1 3/4"

Wrought Steel



a. Mod Hex Appliance Pull

Product Code	C-to-C	Overall	Projection
87003	12"	14 ¾"	2"
87004	18"	20 ⅝"	2 ⅛"

b. Freestone Appliance Pull

Product Code	C-to-C	Overall	Projection
87001	12"	14"	2"
87002	18"	20"	2"

c. Keaton Appliance Pull

Product Code	C-to-C	Overall	Projection
86721	12"	12 ½"	1 ¾"
86722	18"	18 ½"	1 ¾"

d. Warwick Appliance Pull

Product Code	C-to-C	Overall	Projection
86711	12"	12 ½"	1 ¾"
86712	18"	18 ½"	1 ¾"

Finish Options:



US4

US10B

US14

US15

US19

US26



e. Jasper Appliance Pull

Product Code	C-to-C	Overall	Projection
86693	12"	13 3/8"	1 7/8"
86694	18"	19 3/8"	1 7/8"

f. Trinity Appliance Pull

Product Code	C-to-C	Overall	Projection
86444	12"	13"	1 3/4"
86445	18"	19"	1 3/4"

g. Alexander Appliance Pull

Product Code	C-to-C	Overall	Projection
86442	12"	13"	2"
86443	18"	19"	2"

Appliance Pulls

Finish Options:



US4



US10B



US14



US15



US19



US26



a. Bar Appliance Pull

Product Code	C-to-C	Overall	Projection
86351	12"	15 ¼"	2"
86352	18"	21 ¼"	2"

b. Trail Appliance Pull

Product Code	C-to-C	Overall	Projection
86440	12"	13"	2"
86441	18"	19"	2"

c. Bauhaus Appliance Pull

Product Code	C-to-C	Overall	Projection
86345	12"	12 ⅝"	1 ⅞"
86346	18"	18 ⅝"	1 ⅞"

Finish Options:



US4

US10B

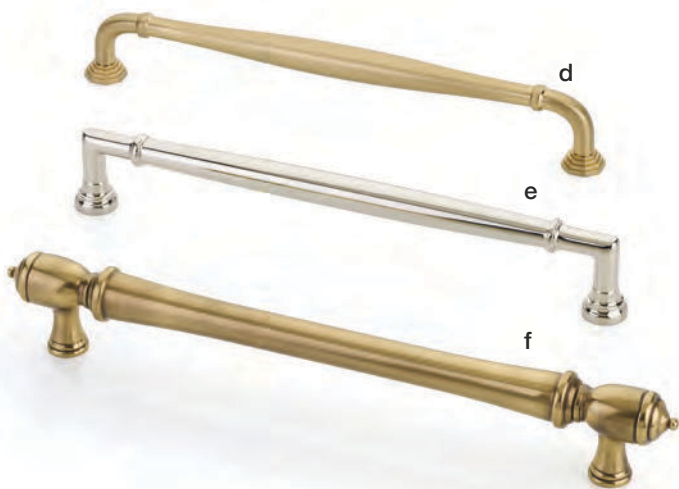
US14

US15

US19

US26

US3NL



d. Blythe Appliance Pull

Product Code	C-to-C	Overall	Projection
86910	12"	12 ½"	2"
86911	18"	18 ½"	2"

e. Westwood Appliance Pull

Product Code	C-to-C	Overall	Projection
86912	12"	12 ½"	2"
86913	18"	18 ½"	2 ⅛"

Finish Options:



US4

US10B

US14

US15

US19

US26

f. Spindle Appliance Pull

Product Code	C-to-C	Overall	Projection
86343	12"	14 ½"	2 ⅛"
86344	18"	20 ½"	2 ⅛"

Finish Options:



US3

US7

US10B

US14

US15



US15A



US19



US26



US3NL

Appliance Pulls



a. Sandcast Bronze Rustic Modern Rectangular Appliance Pull

Product Code	C-to-C	Overall	Projection
86674	12"	12 5/8"	1 3/4"
86675	18"	18 5/8"	1 3/4"

b. Sandcast Bronze Rail Appliance Pull

Product Code	C-to-C	Overall	Projection
86349	12"	12 3/4"	2"
86350	18"	18 3/4"	2"

Finish Options:



FB



MB



TWB

c. Tuscany Bronze Fluted Appliance Pull

Product Code	C-to-C	Overall	Projection
86347	12"	12 7/8"	2"
86348	18"	18 7/8"	2"

Finish Options:



FB



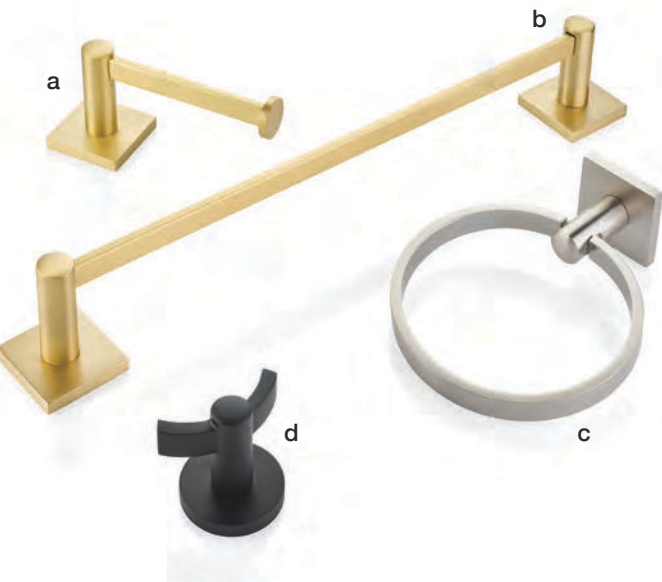
MB



Bath Hardware



66



MODERN BRASS

a. Modern Brass Paper Holder - Bar Style

Product Code	Overall	Projection
2804	6 3/8"	2 7/8"

b. Modern Brass Towel Bar

Product Code	Overall	Projection
28024	12"	3 1/4"
28021	18"	3 1/4"
28022	24"	3 1/4"
28023	30"	3 1/4"

c. Modern Brass Towel Ring

Product Code	Overall	Projection
2801	6 1/2"	2 5/8"

d. Modern Brass Double Hook

Product Code	Overall	Projection
2809	3 5/8"	2 7/8"

Rosette Options:



Disk



Modern Rectangular



Neos



Square



Urban Modern



Small Disc

Finish Options:



US4



US10B



US14



US15



US19



US26



US3NL



TRANSITIONAL BRASS

a. Transitional Brass Single Hook

Product Code	Overall	Projection
2909	2 3/8"	2 7/8"

b. Transitional Brass Towel Ring

Product Code	Overall	Projection
2901	7"	3 1/2"

c. Transitional Brass Towel Bar

Product Code	Overall	Projection
29025	12"	3 1/4"
29026	18"	3 1/4"
29027	24"	3 1/4"
29028	30"	3 1/4"

d. Transitional Brass Paper Holder - Bar Style

Product Code	Overall	Projection
2904	6 7/8"	3 3/8"

Rosette Options:



Disk



Square



Quincy



Wilshire



Small
Regular



Small
Disc

Finish Options:



US4



US10B



US14



US15



US19



US26



US3NL

Bath Hardware



TRADITIONAL BRASS

a. Brass Double Towel Bar

Product Code	Overall	Projection
26031	18"	5 ³ / ₈ "
26032	24"	5 ³ / ₈ "
26033	30"	5 ³ / ₈ "

b. Brass Towel Ring

Product Code	Overall	Projection
2601	6 ⁷ / ₈ "	2 ⁵ / ₈ "

c. Brass Double Hook

Product Code	Overall	Projection
2609	3 ³ / ₈ "	2 ⁷ / ₈ "

d. Brass Robe Hook

Product Code	Overall	Projection
2606	4"	2 ⁵ / ₈ "

e. Brass Double Hook

Product Code	Overall	Projection
2607	3 ¹ / ₂ "	2 ¹ / ₈ "

f. Brass Towel Bar

Product Code	Overall	Projection
26024	12"	3 ³ / ₈ "
26021	18"	3 ³ / ₈ "
26022	24"	3 ³ / ₈ "
26023	30"	3 ³ / ₈ "

g. Brass Paper Holder - Spring Rod Style

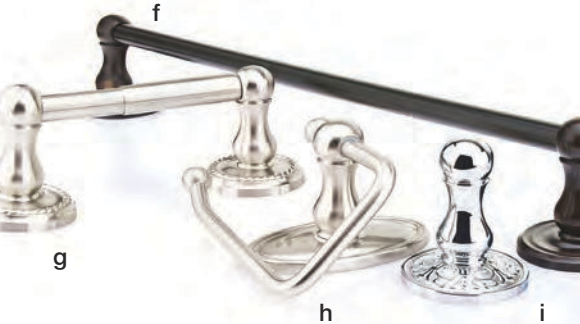
Product Code	Overall	Projection
2605	7 ¹ / ₈ "	3 ³ / ₈ "

h. Brass Paper Holder - Bar Style

Product Code	Overall	Projection
2604	6 ³ / ₄ "	3 ³ / ₈ "

i. Brass Single Hook

Product Code	Projection
2608	3 ¹ / ₂ "



Rosette Options:



Finish Options:



* Not Available in US3, US7, and US15A finishes.

** Satin Brass (US4) available in Brass Robe Hook only.

*** Polished Nickel-Lifetime (US14) available in Regular, Oval, Rectangular, #8, Quincy, Wilshire, Disk, Square, Modern Rectangular, Neos, Urban Modern, Small Regular, and Small Disc Rosettes only.

† Arts & Crafts Rosette available in US10B, US15, US19 and US3NL finishes or



SANDCAST BRONZE

a. Sandcast Bronze Towel Bar

Product Code	Overall	Projection
23024	12"	3 5/8"
23021	18"	3 5/8"
23022	24"	3 5/8"
23023	30"	3 5/8"

b. Sandcast Bronze Paper Holder - Bar Style

Product Code	Overall	Projection
2303	6 1/2"	3"

c. Sandcast Bronze 3 Hooks with Rectangular Plate

Product Code	Overall	Projection
2307	9 1/2" x 2"	2 1/2"

d. Sandcast Bronze Robe Hook

Product Code	Overall	Projection
86106	3 7/8"	2 1/2"

e. Sandcast Bronze Double Hook

Product Code	Overall	Projection
2306	3 1/4"	2"

f. Sandcast Bronze Paper Holder - Spring Rod Style

Product Code	Overall	Projection
2304	7 1/4"	3"



g. Sandcast Bronze Double Towel Bar

Product Code	Overall	Projection
23051	18"	5 1/2"
23052	24"	5 1/2"
23053	30"	5 1/2"

h. Sandcast Bronze Single Hook

Product Code	Projection
2308	2 3/4"

i. Sandcast Bronze Towel Ring

Product Code	Overall	Projection
2301	6 1/2"	3"

Finish Options:



FB



MB



TWB

Rosette Options:



#1



#2



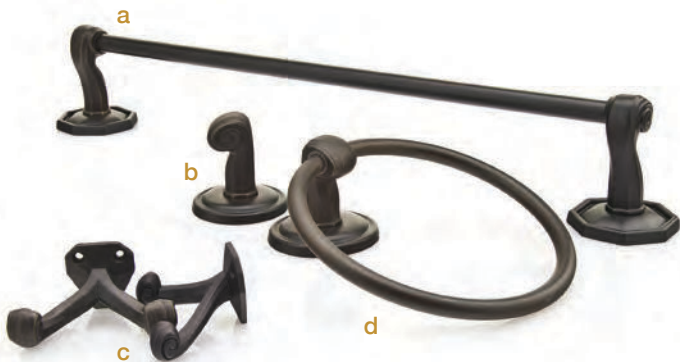
#3



#4



#6



TUSCANY BRONZE

a. Tuscany Bronze Towel Bar

Product Code	Overall	Projection
27024	12"	3 ³ / ₈ "
27021	18"	3 ³ / ₈ "
27022	24"	3 ³ / ₈ "
27023	30"	3 ³ / ₈ "

b. Tuscany Bronze Single Hook

Product Code	Projection
2706	2 ³ / ₄ "

c. Tuscany Bronze Double Hook

Product Code	Overall	Projection
2707	3 ³ / ₈ "	2 ¹ / ₄ "

d. Tuscany Bronze Towel Ring

Product Code	Overall	Projection
2701	6 ¹ / ₂ "	2 ⁵ / ₈ "



e. Tuscany Bronze Double Towel Bar

Product Code	Overall	Projection
27081	18"	5 3/8"
27082	24"	5 3/8"
27083	30"	5 3/8"

f. Tuscany Bronze Paper Holder - Bar Style

Product Code	Overall	Projection
2705RH	6 1/4"	3"
2705LH	6 1/4"	3"

g. Tuscany Bronze Paper Holder - Spring Rod Style

Product Code	Overall	Projection
2704	7 1/8"	3"

Rosette Options:



#11



#12



#14



#15

Finish Options:



FB



MB



WROUGHT STEEL

a. Wrought Steel Paper Holder - Bar Style

Product Code	Overall	Projection
2503	8 1/8"	3 3/8"

b. Wrought Steel Robe Hook

Product Code	Overall	Projection
25050	3 3/4"	3"

c. Wrought Steel Towel Bar

Product Code	Overall	Projection
25024	12"	3 3/8"
25021	18"	3 3/8"
25022	24"	3 3/8"
25023	30"	3 3/8"

d. Wrought Steel Paper Holder - Spring Rod Style

Product Code	Overall	Projection
2504	9 3/8"	3 3/8"

e. Wrought Steel Towel Ring

Product Code	Overall	Projection
2501	6 1/2"	2 5/8"

Rosette Options:



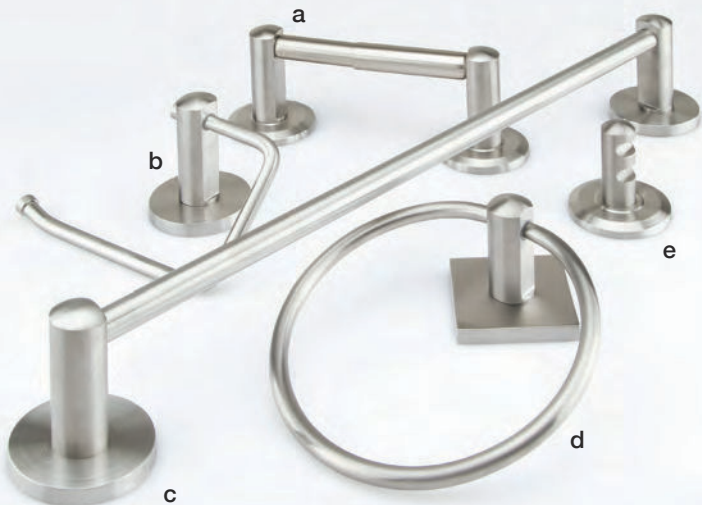
Finish Options:



FBS



SWS



STAINLESS STEEL

a. Stainless Steel Paper Holder - Spring Rod Style

Product Code	Overall	Projection
S7220	8 1/2"	3 3/8"

b. Stainless Steel Paper Holder - Bar Style

Product Code	Overall	Projection
S7210	6 3/8"	3 1/8"

c. Stainless Steel Towel Bar

Product Code	Overall	Projection
S7040	12"	3 1/4"
S7010	18"	3 1/4"
S7020	24"	3 1/4"
S7030	30"	3 1/4"

d. Stainless Steel Towel Ring

Product Code	Overall	Projection
S7300	6 7/8"	2 3/4"

e. Stainless Steel Single Hook

Product Code	Projection
S71001	2 5/8"

Rosette Options:



Beveled



Disk



Square

Finish Option:

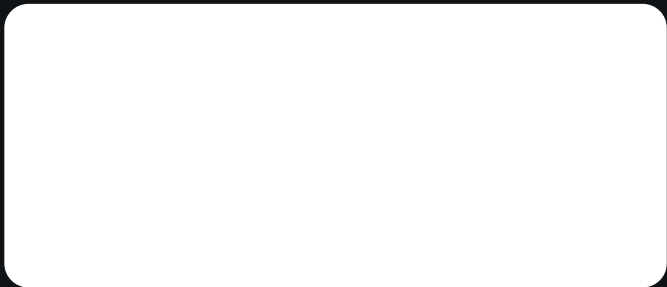


SS

The ASSA ABLOY Group is the global leader in access solutions. Every day we help people feel safe, secure and experience a more open world.

EMTEK[®]
ASSA ABLOY

EMTEK Products, Inc.
Tel: 800-356-2741 • 626-961-0413
Fax: 800-577-5771 • 626-336-2812
emtek.com



Copyright © 2020, EMTEK Products, Inc., an ASSA ABLOY Group company. All rights reserved. Reproduction in whole or in part without the express written permission of EMTEK Products, Inc. is prohibited.



BX4-BROCHURE7
JANUARY 2020